



P&A  
Grant Thornton

**2022**

**TAX CALENDAR**

---

**GOING BEYOND  
THE NEW NORMAL**

# About P&A Grant Thornton

P&A Grant Thornton is a leading professional services firm that helps dynamic organizations go beyond their perceived limits by providing insightful, actionable advice and services through our client-caring team of agile audit, tax, and business professionals.

Punongbayan & Araullo (P&A) is the Philippine member firm of Grant Thornton International Ltd (GTIL), one of the world's leading organizations of independently owned and managed accounting assurance, tax, and advisory firms.

**Benjamin R. Punongbayan**  
Founder

**Jose G. Araullo**  
Chairman Emeritus

**Ma. Victoria C. Españó**  
Chairperson & CEO  
E Marivic.Espano@ph.gt.com

**Jun C. Cuaresma**  
Managing Partner & COO  
E Jun.Cuaresma@ph.gt.com

**Audit and Assurance**  
**Boyet Murcia**  
Audit & Assurance Practice Leader  
E Boyet.Murcia@ph.gt.com

**Advisory Services**  
**Mhycke C. Gallego**  
Advisory Services Practice Leader  
E Mhycke.Gallego@ph.gt.com

**Tax Advisory and Compliance**  
**Olivier D. Aznar**  
Tax Advisory and Compliance Practice Leader  
E Vier.Aznar@ph.gt.com

**Business Process Solutions/ Outsourcing**  
**Paz V. Malubay**  
Business Process Solutions Practice Leader  
E Paz.Malubay@ph.gt.com

## Fast Facts



**25**  
Partners



**1000+**  
Employees



**5**  
Offices

## Our Services

**Audit** Annual and short period audits  
Financial statements compilation • Review engagement • Other public assurance services

**Advisory** Business risk services • Business consulting services • Transaction services  
• Forensic advisory • Human capital services

**Tax** Tax Advisory • Tax compliance • Corporate services • Tax education and advocacy

**BPS/Outsourcing** Accounting services  
Staff augmentation services • Fixed assets record maintenance • Offshoring • Payroll processing

## Locations

### Head Office

19th and 20th floor, Tower 1,  
The Enterprise Center 6766 Ayala Avenue,  
Makati City  
T +63 2 8988 22 88  
M +63 918 901 6995  
+63 919 096 3486  
E Jun.Cuaresma@ph.gt.com

### P&A Grant Thornton Outsourcing, Inc.

19th floor, Tower 1, The Enterprise Center  
Ayala Avenue, Makati City  
T +63 2 8864 07 41  
+63 2 8813 69 57  
F +63 2 8893 26 72  
E Paz.Malubay@ph.gt.com

### Vertis North

24th Floor, Corporate Center Tower 3,  
Vertis North, Quezon City, 1116  
T +63 791 50439  
M +63 917 8585032  
E Marivic.Espano@ph.gt.com

### Cebu

Penthouse, Suite, Unit 1603,  
FLB Corporate Center,  
Archbishop Reyes Avenue Cebu  
Business Park, Cebu City 6000  
T +63 32 231 60 90; +63 32 233 0574  
M +63 917 582 0536  
E Wendell.Ganhinhin@ph.gt.com

### Cavite

Level 3, Robinsons Place Dasmariñas  
Aguinaldo Highway cor. Governor's Drive,  
Sitio, Pala-pala, Dasmariñas City, Cavite  
T +63 2 8988 2288 ext. 616-617  
M +63 917 557 5784  
E Nelson.Dinio@ph.gt.com

### Davao

The Penthouse, Suite 173, 17th Floor  
The Landco-PDCP Corporate Centre,  
J.P. Laurel Avenue, 8000 Davao City  
T +63 82 221 14 98 to 99  
+63 82 221 15 00  
M +63 917 325 9837  
E Meg.Punay@ph.gt.com



## FOREWORD

Looking back at the previous year, we hurdled many challenges. And we can say with more confidence now that compared to where we were when the pandemic struck, we have somehow learned the ropes in thriving amid the health crisis. Strides have been made to continue to provide services to our clients, at the level of quality and responsiveness that we uphold despite health and safety constraints. Our Firm ensured that employees are safe, and that digital transformation and business continuity plans are strengthened to withstand future challenges.

If there's one thing that this unprecedented new normal has taught us, it's that we are more resilient than we think. Nearly two years into a new reality ushered by the COVID-19 pandemic, here we are, turning challenges into opportunities that propel us nowhere but up. The underlying reason is clear – keeping a positive, forward-looking mindset is crucial, now more than ever.

We have also seen the importance of lending a hand to the communities around us as we recognize that the impact of the pandemic is broad-based. Addressing the challenges of the pandemic will require the collaborative efforts of government and the private sector. We must work together.

Embracing resilience, doing things with compassion and collaborating with our different stakeholders are the major tools we need to recover, take advantage of the new opportunities that will open up to us, and create a better future. It entails adapting a mindset that will allow us to add more value to our corporate endeavors as we form new, meaningful connections with our clients and our immediate communities.

As we welcome a new year, we invite you to share this vision. Maintaining our key strengths is vital, but to continue moving forward, we must go beyond our perceived limitations.

**Ma. Victoria C. España**

*Chairperson and CEO*

## 01 SATURDAY – LAST DAY OF

### SUBMISSION

- Engagement Letters and Renewals or Subsequent Agreements for Financial Audit by Independent CPAs for FY beginning March 1, 2022

## 05 WEDNESDAY – LAST DAY OF

### e-FILING/FILING and e-PAYMENT/PAYMENT

- BIR Form No. 2000 for December 2021
- BIR Form No. 2000-OT for December 2021

## 08 SATURDAY – LAST DAY OF

### e-SUBMISSION

- Sales report by taxpayers using CRM/POS and other sales machines with TIN ending in an even number for December 2021

### SUBMISSION

- Transcript sheets of ORB for alcohol products, tobacco products, petroleum products, non-essential goods, sweetened beverage products, mineral products and automobiles for December 2021

## 10 MONDAY – LAST DAY OF

### e-FILING/FILING and e-PAYMENT/PAYMENT

- BIR Form No. 1600 and 1606 for December 2021 (all files)
- BIR Form No. 2200C for December 2021
- BIR Form No. 0620 for December 2021

### e-SUBMISSION

- Sales report by taxpayers using CRM/POS and other sales machines with TIN ending in an odd number for December 2021
- MAP of BIR Form No. 1600 for December 2021 (all files)

### SUBMISSION

- Transcript sheets of ORB for mineral products for December 2021
- A sugar cooperative's list of buyers of sugar for December 2021, together with a copy of certificate of advance payment of VAT made by each buyer appearing on the list
- Information return on releases of refined sugar by the proprietor or operator of a sugar refinery or mill for December 2021

### DISTRIBUTION

- BIR Form No. 2306 (VAT/PT) for December 2021
- BIR Form No. 2307 (PT) for December 2021

## 11 TUESDAY – LAST DAY OF

### e-FILING

- BIR Form No. 1601C for December 2021 (eFPS filers under Group E)

## 12 WEDNESDAY – LAST DAY OF

### e-FILING

- BIR Form No. 1601C for December 2021 (eFPS filers under Group D)

## 13 THURSDAY – LAST DAY OF

### e-FILING

- BIR Form No. 1601C for December 2021 (eFPS filers under Group C)

### FILING

- SEC - AFS of corporations whose securities are registered under RSA or SRC for FY ended September 2021

## 14 FRIDAY – LAST DAY OF

### e-FILING

- BIR Form No. 1601C for December 2021 (eFPS filers under Group B)

### REMITTANCE

- HDMF - MCRF contributions by employers whose names start with letters A to D for December 2021

### SUBMISSION

- PEZA - AFS and Annual ITR of PEZA-registered enterprises for FY ended August 2021, filed with the BIR on December 15, 2021
- IPA - Annual Tax Incentives Report of RBEs as required under TIMTA for the FY ended August 2021

## 15 SATURDAY – LAST DAY OF

### FILING and PAYMENT

- BIR Form No. 1601C for December 2021 (non-eFPS filers)

### e-FILING

- BIR Form No. 1601C for December 2021 (eFPS filers under Group A)

### e-SUBMISSION

- Summary list of machines (CRM-POS) sold by machine distributors/dealers/vendors/suppliers for for CO ended December 2021

### e-FILING/FILING and e-PAYMENT/PAYMENT

- BIR Form No. 1702 and 1702-4IF for FY ended September 2021
- BIR Form No. 2200C for CY 2020
- BIR Form No. 1707A for FY ended September 2021

### SUBMISSION

- Bound, loose-leaf books of accounts and other accounting records for CY 2021
- Annual ITR attachments for the FY ended September 2021, including BIR Form No. 1709 for non-eFPS filers
- List of medical practitioners of hospitals and clinics for CO ended December 2021

### REMITTANCE

- PhilHealth - PAR contributions of Employers with PENs ending 0+ for December 2021

## 19 WEDNESDAY – LAST DAY OF

### REMITTANCE

- HDMF - MCRF contributions by employers whose names start with letters E to L for December 2021

## 20 THURSDAY – LAST DAY OF

### FILING and PAYMENT

- BIR Form No. 2550M for December 2021 (non-eFPS filers)

### PAYMENT

- LGU - IBT in full or first installment for CY 2022
- LGU - Renewal of mayor's permit for CY 2022

### e-PAYMENT

- BIR Form No. 1601C for December 2021 (all eFPS filers)

### e-SUBMISSION

- SAWT for BIR Form No. 2306 for December 2021 (non-eFPS filers)
- Quarterly Report of Printer for CO December 2021

### SUBMISSION

- Quarterly information on DST-exempt OCW's or OFW's remittances for CO ended December 2021
- PEZA - Economic Zone Monthly Performance Report for December 2021
- PhilHealth - remittance report of Employers with PENs ending 4+ for December 2021

### DISTRIBUTION

- BIR Form No. 2307 (EWT) for CO ended December 2021

### REMITTANCE

- PhilHealth - PAR contributions of employers with PENs ending 5-9 for December 2021

## 21 FRIDAY – LAST DAY OF

### e-FILING

- BIR Form No. 2550M for December 2021 (eFPS filers under Group E)

### e-SUBMISSION

- SAWT for BIR Form No. 2306 for December 2021 (eFPS filers under Group E)

## 22 SATURDAY – LAST DAY OF

### e-FILING

- BIR Form No. 2550M for December 2021 (eFPS filers under Group D)

### e-SUBMISSION

- SAWT for BIR Form No. 2306 for December 2021 (eFPS filers under Group D)

## 23 SUNDAY – LAST DAY OF

### e-FILING

- BIR Form No. 2550M for December 2021 (eFPS filers under Group C)

### e-SUBMISSION

- SAWT for BIR Form No. 2306 for December 2021 (eFPS filers under Group C)

## 24 MONDAY – LAST DAY OF

### e-FILING

- BIR Form No. 2550M for December 2021 (eFPS filers under Group B)

### e-SUBMISSION

- SAWT for BIR Form No. 2306 for December 2021 (eFPS filers under Group B)

### REMITTANCE

- HDMF - MCRF contributions by employers whose names start with letters M to O for December 2021

## 25 TUESDAY – LAST DAY OF

### e-FILING

- BIR Form No. 2550M for December 2021 (eFPS filers under Group A)

### e-PAYMENT

- BIR Form No. 2550M for December 2021 (all eFPS filers)

### e-FILING/FILING and e-PAYMENT/PAYMENT

- BIR Form No. 2550O and 2551Q for CO ended December 2021

### e-SUBMISSION/SUBMISSION

- SLSPi by VAT-registered taxpayers (non-eFPS filers) for CO ended December 2021
- Sworn statement of volume of sales by manufacturers or importers of alcohol and tobacco products for CO ended December 2021
- SAWT for BIR Form No. 2306 for CO ended December 2021
- SAWT for BIR Form No. 2306 for December 2021 (eFPS filers under Group A)

### SUBMISSION

- PhilHealth - remittance report of Employers with PENs ending 5-9 for December 2021
- SAWT for BIR Form No. 2306 for December 2021 (eFPS filers under Group A)

### REFUND

- Excess taxes withheld on compensation by employer for CY 2021

## 28 FRIDAY – LAST DAY OF

### FILING

- SEC - AFS of corporations whose securities are not registered under RSA or SRC for FY ended September 2021

## 29 SATURDAY – LAST DAY OF

### e-FILING/FILING and e-PAYMENT/PAYMENT

- BIR Form No. 1702Q for TO ended November 2021

### e-SUBMISSION

- SAWT for BIR Form No. 2307 for TO ended November 2021

### SUBMISSION

- PEZA - Annual PEZA Report FY October 2021

## 30 SATURDAY – LAST DAY OF

### e-SUBMISSION

- SLSPi by VAT-registered taxpayers (all eFPS filers) for CO ended December 2021

### REGISTRATION

- Computerized books of accounts and other accounting records in CD-R, DVD-R or other optical media, and affidavits on the post-reporting requirements for CAS for CY 2021

### SUBMISSION

- Inventory list for TY ended December 2021
- Annual ITR attachments for the FY ended September 2021, including BIR Form No. 1709 (for eFPS filers)

## 31 MONDAY – LAST DAY OF

### e-FILING/FILING and e-PAYMENT/PAYMENT

- BIR Form Nos. 1601EQ, 1601FO, 1602O, 1603O, and 1621 for CO ended December 2021
- BIR Form No. 1604C for CY 2021
- BIR Form No. 1604F for CY 2021

### e-PAYMENT/PAYMENT

- BIR Form No. 1606 for CY 2021 (of all business establishments including self-employed professionals)

### e-SUBMISSION

- QAP for BIR Form Nos. 1601EQ, 1601FO, 1602O, 1603O and 1621 (all files) for CO ended December 2021
- Annual Alphabet of Employees and Pages - BIR Form No. 1604C and 1604F for CY 2021

### SUBMISSION

- BOI - Transcript sheets of ORB by qualified jewelry enterprises for CY 2021
- Sworn statements of lessees, concessionaires, owners or operators of mines or quarries, processors of minerals, and producers or manufacturers of mineral products for second semester of 2021
- Lessees Information Statement, together with contract of lease and building/space layout, as of December 31, 2021
- Sworn declaration of motels and other similar establishments for CY 2021
- Tenants' profile together with the supplemental information as of December 2021
- Sworn Declaration of Income payors/withholding agents stating the number of payees who have submitted sworn declaration with copies of COIR.
- Certification from DOLE/allied agency justifying payment of Hazard Pay (for employees under private sector) or related Department of Budget Management Circular (for employees under public sector) - BIR Form No. 1604C for CY 2021

### REMITTANCE

- HDMF - MCRF contributions by employers whose names start with letters R to Z and numeral for December 2021
- SSS - Online remittance of R-5 contributions of employers for December 2021

### DISTRIBUTION

- BIR Form No. 2304 for CY 2021
- BIR Form No. 2306 (FWT) withheld for CY 2021
- BIR Form No. 2316 for CY 2021

# JANUARY



# JANUARY

S	M	T	W	T	F	S
						1
2	3	4	5	6	7	8
9	10	11	12	13	14	15
16	17	18	19	20	21	22
23	24	25	26	27	28	29
30	31					

---

---

---

---

---

---

---

---

---

---



## Going beyond work standards

IT-related problems? We got you covered! The physical presence of IT staff is very important to ensure business continuity as part of the firm's goal of going beyond despite challenges. As we continue to process daily tasks like helping new hires and outgoing employees, rest assured that the IT team and I will always be here, reporting for duty.

**Allen Dave A. Taylo**  
Semi-Senior HelpDesk Support, PSSD-TSG

## Holidays

New Year's Day - January 1

## 01 TUESDAY – LAST DAY OF

### SUBMISSION

- Engagement Letters and Renewals or Subsequent Agreements for Financial Audit by Independent CPAs for TY beginning April 1, 2022

## 05 SATURDAY – LAST DAY OF

### e-FILING/FILING and e-PAYMENT/PAYMENT

- BIR Form No. 2000 for January 2022
- BIR Form No. 2000-OT for January 2022

## 08 TUESDAY – LAST DAY OF

### e-SUBMISSION

- eSales report by taxpayers using CRM/POS and other sales machines with TIN ending in an even number for January 2022

### SUBMISSION

- Transcript sheets of ORB for alcohol products, tobacco products, petroleum products, non-essential goods, sweetened beverage products, mineral products and automobiles for January 2022

## 10 THURSDAY – LAST DAY OF

### e-FILING/FILING and e-PAYMENT/PAYMENT

- BIR Form Nos. 1600 and 1606 for January 2022 (all filers)
- BIR Form No. 2200C for January 2022
- BIR Form No. 0620 for January 2022

### FILING and REMITTANCE

- BIR Form Nos. 1601C, 0619E and 0619F for January 2022 (non-eFPS Filers)

### e-SUBMISSION

- eSales report by taxpayers using CRM/POS and other sales machines with TIN ending in an odd number for January 2022

- MAP of BIR Form No. 1600 for January 2022 (all filers)

### SUBMISSION

- Transcript sheets of ORB for mineral products for January 2022
- A sugar cooperative's list of buyers of sugar for January 2022, together with a copy of certificate of advance payment of VAT made by each buyer appearing on the list
- Information return on releases of refined sugar by the proprietor or operator of a sugar refinery or mill for January 2022

### DISTRIBUTION

- BIR Form No. 2306 (VAT/PT) for January 2022
- BIR Form No. 2307 (PT) for January 2022

## 11 FRIDAY – LAST DAY OF

### e-FILING

- BIR Form No. 1601C for January 2022 (eFPS filers under Group E)

### e-FILING and e-PAYMENT

- BIR Form Nos. 0619E and 0619F for January 2022 (eFPS filers under Group E)

## 12 SATURDAY – LAST DAY OF

### e-FILING

- BIR Form No. 1601C for January 2022 (eFPS filers under Group D)

### e-FILING and e-PAYMENT

- BIR Form Nos. 0619E and 0619F for January 2022 (eFPS filers under Group D)

## 13 SUNDAY – LAST DAY OF

### e-FILING

- BIR Form No. 1601C for January 2022 (eFPS filers under Group C)

### e-FILING and e-PAYMENT

- BIR Form Nos. 0619E and 0619F for January 2022 (eFPS filers under Group C)

### FILING

- SEC - AFS of corporations whose securities are registered under RSA or SRC for FY ended October 2021

## 14 MONDAY – LAST DAY OF

### e-FILING

- BIR Form No. 1601C for January 2022 (eFPS filers under Group B)

### e-FILING and e-PAYMENT

- BIR Form Nos. 0619E and 0619F for January 2022 (eFPS filers under Group B)

### REMITTANCE

- HDMF - MCRF contributions by employers whose names start with letters A to D for January 2022

### SUBMISSION

- PEZA - AFS and Annual ITR of PEZA-registered enterprises for FY ended September 2021, filed with the BIR on January 15, 2022
- IPA - Annual Tax Incentives Report of RBEs as required under TIMTA for the FY ended September 2021

## 15 TUESDAY – LAST DAY OF

### e-FILING

- BIR Form No. 1601C for January 2022 (eFPS filers under Group A)

### e-FILING and e-PAYMENT

- BIR Form Nos. 0619E and 0619F for January 2022 (eFPS filers under Group A)

### e-PAYMENT

- BIR Form No. 1601C for January 2022 (all eFPS filers)

### e-SUBMISSION

- Summary list of machines (CRM-POS) sold by machine distributors/dealers/vendors/suppliers for IQ ended January 2022

### e-FILING/FILING and e-PAYMENT/PAYMENT

- BIR Form Nos. 1702 and 1702-AIF for FY ended October 2021
- BIR Form No. 1704 for FY ended January 2021
- BIR Form No. 1707A for FY ended October 2021

### SUBMISSION

- Bound, loose-leaf books of accounts and other accounting records for FY ended January 2022
- Annual ITR attachments for the FY ended October 2021, including BIR Form No. 1709 (for non-eFPS Filers)

### REMITTANCE

- PhilHealth - PAR contributions of Employers with PENs ending 0-4 for January 2022

## 19 SATURDAY – LAST DAY OF

### REMITTANCE

- HDMF - MCRF contributions by employers whose names start with letters E to L for January 2022

## 20 SUNDAY – LAST DAY OF

### FILING and PAYMENT

- BIR Form No. 2550M for January 2022 (non-eFPS filer)

### e-SUBMISSION

- SAWT for BIR Form No. 2306 for January 2022 (non-eFPS filers)

### SUBMISSION

- PEZA - Economic Zone Monthly Performance Report for January 2022
- PhilHealth - remittance report of Employers with PENs ending 0-4 for January 2022

### DISTRIBUTION

- BIR Form No. 2307 (EWT) for IQ ended January 2022

### REMITTANCE

- PhilHealth - PAR contributions of employers with PENs ending 5-9 for January 2022

## 21 MONDAY – LAST DAY OF

### e-FILING

- BIR Form No. 2550M for January 2022 (eFPS filers under Group D)

### e-SUBMISSION

- SAWT for BIR Form No. 2306 for January 2022 (eFPS filers under Group E)

## 22 TUESDAY – LAST DAY OF

### e-FILING

- BIR Form No. 2550M for January 2022 (eFPS filers under Group D)

### e-SUBMISSION

- SAWT for BIR Form No. 2306 for January 2022 (eFPS filers under Group D)

## 23 WEDNESDAY – LAST DAY OF

### e-FILING

- BIR Form No. 2550M for January 2022 (eFPS filers under Group C)

### e-SUBMISSION

- SAWT for BIR Form No. 2306 for January 2022 (eFPS filers under Group C)

## 24 THURSDAY – LAST DAY OF

### e-FILING

- BIR Form No. 2550M for January 2022 (eFPS filers under Group B)

### e-SUBMISSION

- SAWT for BIR Form No. 2306 for January 2022 (eFPS filers under Group B)

### REMITTANCE

- HDMF - MCRF contributions by employers whose names start with letters M to Q for January 2022

## 25 FRIDAY – LAST DAY OF

### e-FILING

- BIR Form No. 2550M January 2022 (eFPS filers under Group A)

### e-PAYMENT

- BIR Form No. 2550M for January 2022 (all eFPS filers)

### e-FILING/FILING and e-PAYMENT/PAYMENT

- BIR Form Nos. 2550Q and 2551Q for IQ ended January 2022

### e-SUBMISSION/SUBMISSION

- SISPI by VAT-registered taxpayers (non-eFPS filer) for IQ ended January 2022
- Sworn statement of volume of sales by manufacturers or importers of alcohol and tobacco products for IQ ended January 2022
- SAWT for BIR Form No. 2306 for IQ ended January 2022
- SAWT for BIR Form No. 2306 for January 2022 (eFPS filers under Group A)

### SUBMISSION

- PhilHealth - remittance report of Employers with PENs ending 5-9 for January 2022

## 28 MONDAY – LAST DAY OF

### FILING

- SEC - AFS of corporations whose securities are not registered under RSA or SRC for FY ended October 2021
- BIR-Certified List of Employees Qualified for Substituted Filing of ITR with attached duplicate copies of signed Certificate of Compensation Payment and Tax Withheld

### SUBMISSION

- PEZA - Annual PEZA Report FY November 2021
- BIR Form No. 2316 for TY 2021

### PAYMENT

- IGI - Community tax certificate (individuals and corporations) for 2021

### SUBMISSION

- BOI - Transcript sheets of ORB by qualified jewelry enterprises for FY January 2021

### REMITTANCE

- HDMF - MCRF contributions by employers whose names start with letters R to Z and numeral for January 2021
- Online remittance of R-5 contributions of employers for January 2022

# FEBRUARY

# FEBRUARY

S	M	T	W	T	F	S
		1	2	3	4	5
6	7	8	9	10	11	12
13	14	15	16	17	18	19
20	21	22	23	24	25	26
27	28					

---

---

---

---

---

---

---

---

---

---



## New normal - A time when we all had to reflect on what we want to impart during these trying times

The pandemic did not stop our team from delivering quality service to clients. Despite the threat of catching the COVID-19 virus, we put our masks on and took that step outside the comfort of our homes. We made sure to accomplish our deliverables without compromising quality. P&A goes beyond the new normal and I had witnessed that first-hand. I am grateful to be a part of a company, which I can proudly call my new home.

**Jett Tapaoan**  
Tax Compliance Associate, Tax Compliance & Advisory Division

### Holidays

- Chinese New Year - February 1
- EDSA People Power Revolution Anniversary - February 25

## 01 SATURDAY - LAST DAY OF

### e-FILING/FILING and e-PAYMENT/PAYMENT

- BIR Form No. 1702Q for TO ended December 2021

### e-FILING/FILING

- BIR Form No. 1604E for CY 2021

### e-SUBMISSION

- SAWT for BIR Form No. 2307 for TO ended December 2021
- Annual Alphabet of Payees - BIR Form No. 1604E for CY 2021

### SUBMISSION

- Engagement Letters and Renewals or Subsequent Agreements for Financial Audit by Independent CPAs for FY beginning May 1, 2022

## 02 WEDNESDAY - LAST DAY OF

### REGISTRATION

- Computerized books of accounts and other accounting records in CD-R, DVD-R or other optical media, and affidavit on the post-reporting requirements for CAS for FY ended January 2022

### SUBMISSION

- Inventory list for FY ended January 2022
- Annual ITR attachments for the FY ended October 2021, including BIR Form No. 1709 [for eFPS Filers]

## 05 SATURDAY - LAST DAY OF

### e-FILING/FILING and e-PAYMENT/PAYMENT

- BIR Form No. 2000 for February 2022
- BIR Form No. 2000-OT for February 2022

## 08 TUESDAY - LAST DAY OF

### e-SUBMISSION

- eSales report by taxpayers using CRM/POS and other sales machines with TIN ending in an even number for February 2022

### SUBMISSION

- Transcript sheets of ORB for alcoholic products, tobacco products, petroleum products, non-essential goods, sweetened beverage products, mineral products and automobiles for February 2022

## 10 THURSDAY - LAST DAY OF

### e-FILING/FILING and e-PAYMENT/PAYMENT

- BIR Form No. 1600 and 1606 for February 2022 [all filers]
- BIR Form No. 2200C for February 2022
- BIR Form No. 0620 for February 2022

### FILING and REMITTANCE

- BIR Form Nos. 1601C, 0619E and 0619F for February 2022 [non-eFPS filers]

### e-SUBMISSION

- eSales report by taxpayers using CRM/POS and other sales machines with TIN ending in an odd number for February 2022
- MAP of BIR Form No. 1600 for February 2022 [all filers]

### SUBMISSION

- Transcript sheets of ORB for mineral products for February 2022
- A sugar cooperative's list of buyers of sugar for February 2022, together with a copy of certificate of advance payment of VAT made by each buyer appearing on the list
- Information return on releases of refined sugar by the proprietor or operator of a sugar refinery or mill for February 2022

### DISTRIBUTION

- BIR Form No. 2306 (VAT/PT) for February 2022
- BIR Form No. 2307 (PT) for February 2022

## 11 FRIDAY - LAST DAY OF

### e-FILING

- BIR Form No. 1601C for February 2022 [eFPS filers under Group E]

### e-FILING and e-PAYMENT

- BIR Form Nos. 0619E and 0619F for February 2022 [eFPS filers under Group E]

## 12 SATURDAY - LAST DAY OF

### e-FILING

- BIR Form No. 1601C for February 2022 [eFPS filers under Group D]

### e-FILING and e-PAYMENT

- BIR Form Nos. 0619E and 0619F for February 2022 [eFPS filers under Group D]

## 13 SUNDAY - LAST DAY OF

### e-FILING

- BIR Form No. 1601C for February 2022 [eFPS filers under Group C]

### e-FILING and e-PAYMENT

- BIR Form Nos. 0619E and 0619F for February 2022 [eFPS filers under Group C]

## 14 MONDAY - LAST DAY OF

### e-FILING

- BIR Form No. 1601C for February 2022 [eFPS filers under Group B]

### e-FILING and e-PAYMENT

- BIR Form Nos. 0619E and 0619F for February 2022 [eFPS filers under Group B]

### REMITTANCE

- HDMF - MCRF contributions by employers whose names start with letters A to D for February 2022

## 15 TUESDAY - LAST DAY OF

### FILING

- SEC - AFS of corporations whose securities are registered under RSA or SRC for FY ended November 2021

### e-FILING

- BIR Form No. 1601C for February 2022 [eFPS filers under Group A]

### e-FILING and e-PAYMENT

- BIR Form Nos. 0619E and 0619F for February 2022 [eFPS filers under Group A]

### e-PAYMENT

- BIR Form No. 1601C for February 2022 [all eFPS filers]

### e-SUBMISSION

- Summary list of machines [CRM-POS] sold by machine distributors/dealers/vendors/suppliers for TO ended February 2022

### e-FILING/FILING and e-PAYMENT/PAYMENT

- BIR Form Nos. 1702 and 1702-AIF for FY ended November 2021
- BIR Form No. 1704 for FY ended February 2021
- BIR Form No. 1707A for FY ended November 2021

### SUBMISSION

- Bound, loose-leaf books of accounts and other accounting records for FY ended February 2022
- Annual ITR attachments for the FY ended November 2021, including BIR Form No. 1709 [for non-eFPS Filers]
- PEZA - Annual Tax Incentives Report - VAT, Excise Tax and Duty-Based Incentives under TIMIA for CY 2021

### REMITTANCE

- PhilHealth - PAR contributions of Employers with PENs ending 0-4 for February 2022

## 17 THURSDAY - LAST DAY OF

### SUBMISSION

- PEZA - AFS and Annual ITR of PEZA-registered enterprises for FY ended October 2021, filed with the BIR on February 15, 2022
- IPA - Annual Tax Incentives Report of RBEs as required under TIMIA for the FY ended October 2021

## 19 FRIDAY - LAST DAY OF

### REMITTANCE

- HDMF - MCRF contributions by employers whose names start with letters E to L for February 2022

## 20 SUNDAY - LAST DAY OF

### FILING and PAYMENT

- BIR Form No. 2550M for February 2022 [non-eFPS filers]

### e-SUBMISSION

- SAWT for BIR Form No. 2306 for February 2022 [non-eFPS filers]

### SUBMISSION

- PEZA - Economic Zone Monthly Performance Report for February 2022
- PhilHealth - remittance report of Employers with PENs ending 0-4 for February 2022

### DISTRIBUTION

- BIR Form No. 2307 [EWT] for TO ended February 2022

### REMITTANCE

- PhilHealth - PAR contributions of employers with PENs ending 5-9 for February 2022

## 21 MONDAY - LAST DAY OF

### e-FILING

- BIR Form No. 2550M for February 2022 [eFPS filers under Group E]

### e-SUBMISSION

- SAWT for BIR Form No. 2306 for February 2022 [eFPS filers under Group E]

## 22 TUESDAY - LAST DAY OF

### e-FILING

- BIR Form No. 2550M for February 2022 [eFPS filers under Group D]

### e-SUBMISSION

- SAWT for BIR Form No. 2306 for February 2022 [eFPS filers under Group D]

## 23 WEDNESDAY - LAST DAY OF

### e-FILING

- BIR Form No. 2550M for February 2022 [eFPS filers under Group C]

### e-SUBMISSION

- SAWT for BIR Form No. 2306 for February 2022 [eFPS filers under Group C]

## 24 THURSDAY - LAST DAY OF

### e-FILING

- BIR Form No. 2550M for February 2022 [eFPS filers under Group B]

### e-SUBMISSION

- SAWT for BIR Form No. 2306 for February 2022 [eFPS filers under Group B]

### REMITTANCE

- HDMF - MCRF contributions by employers whose names start with letters M to O for February 2022

## 25 FRIDAY - LAST DAY OF

### e-FILING

- BIR Form No. 2550M for February 2022 [eFPS filers under Group A]

### e-PAYMENT

- BIR Form No. 2550M for February 2022 [all eFPS filers]

### e-FILING/FILING and e-PAYMENT/PAYMENT

- BIR Form Nos. 2550Q and 2551Q for TO ended February 2022

### e-SUBMISSION/SUBMISSION

- SLSPI by VAT-registered taxpayers [non-eFPS filers] for TO ended February 2022
- Sworn statement of volume of sales by manufacturers or importers of alcohol and tobacco products for TO ended February 2022
- SAWT for BIR Form No. 2306 for TO ended February 2022
- SAWT for BIR Form No. 2306 for February 2022 [eFPS filers under Group A]

### SUBMISSION

- PhilHealth - remittance report of Employers with PENs ending 5-9 for February 2022

## 30 WEDNESDAY - LAST DAY OF

### FILING

- SEC - AFS of corporations whose securities are not registered under RSA or SRC for FY ended November 2021

### e-SUBMISSION

- SLSPI by VAT-registered taxpayers [all eFPS filers] for TO ended February 2022

### REGISTRATION

- Computerized books of accounts and other accounting records in CD-R, DVD-R or other optical media, and affidavit on the post-reporting requirements for CAS for FY ended February 2022

### SUBMISSION

- Inventory list for FY ended February 2022
- Annual ITR attachments for the FY ended November 2021, including BIR Form No. 1709 [for eFPS Filers]

## 31 THURSDAY - LAST DAY OF

### PAYMENT

- LGU - Payment of real property tax first installment for 2022

### SUBMISSION

- PEZA - Annual PEZA Report CY 2021
- BOI - Transcript sheets of ORB by qualified jewelry enterprises for FY ended February 2022

### REMITTANCE

- HDMF - MCRF contributions by employers whose names start with letters R to Z and numeral for February 2022
- SSS - Online remittance of R-5 contributions of employers for February 2022

# MARCH

# MARCH



## Extending a helping hand

Giving back to the community takes passion and commitment, and so does sharing. Whatever little we can offer, particularly during this trying time, will definitely go a long way in helping members of our community. Keep the joy of giving and sharing alive by going beyond in aiding those who need it most.

**Bela Dumas**

Junior, Finance - Billing and Collection

S	M	T	W	T	F	S
		1	2	3	4	5
6	7	8	9	10	11	12
13	14	15	16	17	18	19
20	21	22	23	24	25	26
27	28	29	30	31		

---

---

---

---

---

---

---

---

---

---

## 01 FRIDAY - LAST DAY OF

### e-FILING/FILING and e-PAYMENT/PAYMENT

- BIR Form 1702Q for TO ended January 2022

### e-SUBMISSION

- SAWT for BIR Form No. 2307 for TO ended January 2022

### SUBMISSION

- Engagement Letters and Renewals or Subsequent Agreements for Financial Audit by Independent CPAs for FY beginning June 1, 2022

## 05 TUESDAY - LAST DAY OF

### e-FILING/FILING and e-PAYMENT/PAYMENT

- BIR Form No. 2000 for March 2022
- BIR Form No. 2000-OT for March 2022

## 08 FRIDAY - LAST DAY OF

### e-SUBMISSION

- eSales report by taxpayers using CRM/POS and other sales machines with TIN ending in an even number for March 2022

### SUBMISSION

- Transcript sheets of ORB for alcohol products, tobacco products, petroleum products, non-essential goods, sweetened beverage products, mineral products and automobiles for March 2022

## 10 SUNDAY - LAST DAY OF

### e-FILING/FILING and e-PAYMENT/PAYMENT

- BIR Form No. 1600 and 1606 for March 2022 (all filers)
- BIR Form No. 2200C for March 2022
- BIR Form No. 0620 for March 2022

### FILING and REMITTANCE

- BIR Form No. 1601C for March 2022 (non-eFPS filers)

### e-SUBMISSION

- eSales report by taxpayers using CRM/POS and other sales machines with TIN ending in an odd number for March 2022
- MAP of BIR Form No. 1600 for March 2022 (all filers)

### SUBMISSION

- Transcript sheets of ORB for mineral products for March 2022
- A sugar cooperative's list of buyers of sugar for March 2022, together with a copy of certificate of advance payment of VAT made by each buyer appearing on the list
- Information return on releases of refined sugar by the proprietor or operator of a sugar refinery or mill for March 2022

### DISTRIBUTION

- BIR Form No. 2306 (VAT/PT) for March 2022
- BIR Form No. 2307 (PT) for March 2022

## 11 MONDAY - LAST DAY OF

### e-FILING

- BIR Form No. 1601C for March 2022 (eFPS filers under Group E)

## 12 TUESDAY - LAST DAY OF

### e-FILING

- BIR Form No. 1601C for March 2022 (eFPS filers under Group D)

## 13 WEDNESDAY - LAST DAY OF

### e-FILING

- BIR Form No. 1601C for March 2022 (eFPS filers under Group C)

## 14 THURSDAY - LAST DAY OF

### e-FILING

- BIR Form No. 1601C for March 2022 (eFPS filers under Group B)

### REMITTANCE

- HDMF - MCRF contributions by employers whose names start with letters A to D for March 2022

### SUBMISSION

- PEZA - AFS and Annual ITR of PEZA-registered enterprises for FY ended November 2021, filed with the BIR on March 15, 2022
- IPA - Annual Tax Incentives Report of RBEs as required under TIMTA for the FY ended November 2021

## 15 FRIDAY - LAST DAY OF

### FILING

- SEC - AFS of corporations whose securities are registered under RSA or SRC for CY ended December 2021

### e-FILING

- BIR Form No. 1601C for March 2022 (eFPS filers under Group A)

### e-PAYMENT

- BIR Form No. 1601C for March 2022 (all eFPS filers)

### e-SUBMISSION

- Summary list of machines (CRM-POS) sold by machine distributors/dealers/vendors/suppliers for CO ended March 2022

### e-FILING/FILING and e-PAYMENT/PAYMENT

- BIR Form Nos. 1702 and 1702-AIF for CY 2021
- BIR Form No. 1704 for FY ended March 2021
- BIR Form No. 1707A for CY 2021
- BIR Form Nos. 1701 and 1701-AIF for CY 2021

### SUBMISSION

- Bound, loose-leaf books of accounts and other accounting records for FY ended March 2022
- Annual ITR attachments for the CY 2021, including BIR Form No. 1709 (for non-eFPS filers)
- List of medical practitioners of hospitals and clinics for CO ended March 2022

### REMITTANCE

- PhilHealth - PAR contributions of Employers with PENs ending 0-4 for March 2022

## 19 TUESDAY - LAST DAY OF

### REMITTANCE

- HDMF - MCRF contributions by employers whose names start with letters E to L for March 2022

## 20 WEDNESDAY - LAST DAY OF

### FILING and PAYMENT

- BIR Form No. 2550M for March 2022 (non-eFPS filers)

### PAYMENT

- LGU - LBT second installment for CY 2022

### e-SUBMISSION

- SAWT for BIR Form No. 2306 for March@2022 (non-eFPS filers)
- Quarterly Report of Printer for CO March 2022

### SUBMISSION

- Quarterly information on DST-exempt OCW's or OFW's remittances for CO ended March 2022
- PEZA - Economic Zone Monthly Performance Report for March 2022
- PhilHealth - remittance report of Employers with PENs ending 0-4 for March 2022

### DISTRIBUTION

- BIR Form No. 2307 (EWT) for CO ended March 2022

### REMITTANCE

- PhilHealth - PAR contributions of employers with PENs ending 5-9 for March 2022

## 21 THURSDAY - LAST DAY OF

### e-FILING

- BIR Form No. 2650M for March 2022 (eFPS filers under Group E)

### e-SUBMISSION

- SAWT for BIR Form No. 2306 for March@2022 (eFPS filers under Group E)

## 22 FRIDAY - LAST DAY OF

### e-FILING

- BIR Form No. 2650M for March 2022 (eFPS filers under Group D)

### e-SUBMISSION

- SAWT for BIR Form No. 2306 for March@2022 (eFPS filers under Group D)

## 23 SATURDAY - LAST DAY OF

### e-FILING

- BIR Form No. 2650M for March 2022 (eFPS filers under Group C)

### e-SUBMISSION

- SSAWT for BIR Form No. 2306 for March@2022 (eFPS filers under Group C)

## 24 SUNDAY - LAST DAY OF

### e-FILING

- BIR Form No. 2650M for March 2022 (eFPS filers under Group B)

### e-SUBMISSION

- SAWT for BIR Form No. 2306 for March@2022 (eFPS filers under Group B)

### REMITTANCE

- HDMF - MCRF contributions by employers whose names start with letters M to Q for March 2022

## 25 MONDAY - LAST DAY OF

### e-FILING

- BIR Form No. 2650M for March 2022 (eFPS filers under Group A)

### e-PAYMENT

- BIR Form No. 2650M for March 2022 (all eFPS filers)

### e-FILING/FILING and e-PAYMENT/PAYMENT

- BIR Form Nos. 2650O and 2651O for CO ended March 2022

### e-SUBMISSION/SUBMISSION

- SLSPI by VAT-registered taxpayers (non-eFPS taxpayers) for CO ended March 2022
- Sworn statement of volume of sales by manufacturers or importers of alcohol and tobacco products for CO ended March 2022
- SAWT for BIR Form No. 2306 for CO ended March 2022
- SAWT for BIR Form No. 2306 for March 2022 (eFPS filers under Group A)

### SUBMISSION

- PhilHealth - remittance report of Employers with PENs ending 5-9 for March 2022

## 29 FRIDAY - LAST DAY OF

### e-FILING/FILING and e-PAYMENT/PAYMENT

- BIR Form No. 1702Q for TO ended February 2022

### e-SUBMISSION

- SAWT for BIR Form No. 2307 for TO ended February 2022

## 30 SATURDAY - LAST DAY OF

### FILING

- SEC - AFS of corporations whose securities are not registered under RSA or SRC for CY ended December 2021

### e-FILING/FILING and e-PAYMENT/PAYMENT

- BIR Form Nos. 1601EQ, 1601FQ, 1602C, 1603C and 1621 for CO ended March 2022

### e-SUBMISSION

- SLSPI by VAT-registered taxpayers (all eFPS filers) for CO ended March 2022
- OAP for BIR Form Nos. 1601EQ, 1601FQ, 1602C, 1603C and 1621 (all filers) for CO ended March 2022

### REGISTRATION

- Computerized books of accounts and other accounting records in CD-R, DVD-R or other optical media, and affidavit on the post-reporting requirements for CAS for FY ended March 2022

### SUBMISSION

- Inventory list for FY ended March 2022
- Annual ITR attachments for the CY 2021, including BIR Form No. 1709 (for eFPS filers)
- DOI - Transcript sheets of ORB by qualified jewelry enterprises for FY ended March 2022
- Annual Report duly received by the Insurance Commission of all insurance companies

### REMITTANCE

- HDMF - MCRF contributions by employers whose names start with letters R to Z and numeral for March 2022
- SSS - Online remittances of R-5 contributions of employers for March 2022

# APRIL



# APRIL



## Giving back to others

This was during last November's packing and relief operations. We wanted to be of help to families affected by strong flooding brought by typhoon Ulysses and Rolly.

**P&A Foundation, Inc.**

## Holidays

Day of Valor - April 9  
Maundy Thursday - April 14  
Good Friday - April 15  
Black Saturday - April 16

S	M	T	W	T	F	S
					1	2
3	4	5	6	7	8	9
10	11	12	13	14	15	16
17	18	19	20	21	22	23
24	25	26	27	28	29	30

---

---

---

---

---

---

---

---

---

---

## 01 SUNDAY - LAST DAY OF

### SUBMISSION

- Engagement Letters and Renewals or Subsequent Agreements for Financial Audit by Independent CPAs for TY beginning July 1, 2022
- PEZA - Annual PEZA Report FY January 2022

## 05 THURSDAY - LAST DAY OF

### e-FILING/FILING and e-PAYMENT/PAYMENT

- BIR Form No. 2000 for April 2022
- BIR Form No. 2000-OT for April 2022

## 08 SUNDAY - LAST DAY OF

### e-SUBMISSION

- eSales report of taxpayers using CRM/POS and other sales machines with TIN ending in an even number for April 2022

### SUBMISSION

- Transcript sheets of ORB for alcohol products, tobacco products, petroleum products, non-essential goods, sweetened beverage products, mineral products and automobiles for April 2022

## 10 TUESDAY - LAST DAY OF

### e-FILING/FILING and e-PAYMENT/PAYMENT

- BIR Form No. 1600 and 1606 for April 2022 (all filers)
- BIR Form No. 2200C for April 2022
- BIR Form No. 0620 for April 2022

### FILING and REMITTANCE

- BIR Form Nos. 1601C, 0619E and 0619F for April 2022 (non-eFPS filers)

### e-SUBMISSION

- eSales report of taxpayers using CRM/POS and other sales machines with TIN ending in an odd number for April 2022
- MAP of BIR Form No. 1600 for April 2022 (all filers)

### SUBMISSION

- Transcript sheets of ORB for mineral products for April 2022
- A sugar cooperative's list of buyers of sugar for April 2022, together with a copy of certificate of advance payment of VAT made by each buyer appearing on the list
- Information return on releases of refined sugar by the proprietor or operator of a sugar refinery or mill for April 2022

### DISTRIBUTION

- BIR Form No. 2306 (VAT/PT) for April 2022
- BIR Form No. 2307 (PT) for April 2022

## 11 WEDNESDAY - LAST DAY OF

### e-FILING

- BIR Form No. 1601C for April 2022 (eFPS filers under Group E)

### e-FILING and e-PAYMENT

- BIR Form Nos. 0619E and 0619F for April 2022 (eFPS filers under Group E)

## 12 THURSDAY - LAST DAY OF

### e-FILING

- BIR Form No. 1601C for April 2022 (eFPS filers under Group D)

### e-FILING and e-PAYMENT

- BIR Form Nos. 0619E and 0619F for April 2022 (eFPS filers under Group D)

## 13 FRIDAY - LAST DAY OF

### e-FILING

- BIR Form No. 1601C for April 2022 (eFPS filers under Group C)

### e-FILING and e-PAYMENT

- BIR Form Nos. 0619E and 0619F for April 2022 (eFPS filers under Group C)

## 14 SATURDAY - LAST DAY OF

### e-FILING

- BIR Form No. 1601C for April 2022 (eFPS filers under Group B)

### e-FILING and e-PAYMENT

- BIR Form Nos. 0619E and 0619F for April 2022 (eFPS filers under Group B)

### REMITTANCE

- HDMF - MCRF contributions of employers whose names start with letters A to D for April 2022

## 15 TUESDAY - LAST DAY OF

### e-FILING

- BIR Form No. 1601C for April 2022 (eFPS filers under Group A)

### e-FILING and e-PAYMENT

- BIR Form Nos. 0619E and 0619F for April 2022 (eFPS filers under Group A)

### e-PAYMENT

- HDMF - MCRF for April 2022 (all eFPS filers)

### e-SUBMISSION

- Summary list of machines (CRM-POS) sold by machine distributors/dealers/vendors/suppliers for TQ ended April 2022

### e-FILING/FILING and e-PAYMENT/PAYMENT

- BIR Forms, No. 1702 and 1702-AIF for FY ended January 2022
- BIR Form No. 1707A for FY ended January 2022
- BIR Form No. 1701Q for CO ended March 2022

### SUBMISSION

- Bound, loose-leaf books of accounts and other accounting records for FY ended April 2022
- Annual ITR attachments for FY ended January 2022, including BIR Form No. 1709 (for non-eFPS Filers)
- PEZA - AFS and Annual ITR of PEZA-registered enterprises for CY ended December 2021, filed with the BIR on April 15, 2022
- IPA - Annual Tax Incentives Report of RBEs as required under TIMTA for CY 2021

### REMITTANCE

- PhilHealth - PAR contributions for Employers with PENs ending 0-4 for April 2022

## 16 MONDAY - LAST DAY OF

### FILING

- SEC - AFS of corporations whose securities are registered under RSA or SRC for FY ended January 2022

## 19 THURSDAY - LAST OF

### REMITTANCE

- HDMF - MCRF contributions of employers whose names start with letters E to L for April 2022

## 20 FRIDAY - LAST DAY OF

### FILING and PAYMENT

- BIR Form No. 2550M for April 2022 (non-eFPS filers)

### e-SUBMISSION

- SAWT for BIR Form No. 2306 for April 2022 (non-eFPS filers)

### SUBMISSION

- PEZA - Economic Zone Monthly Performance Report for April 2022
- PhilHealth - remittance report for Employers with PENs ending 0-4 for April 2022

### DISTRIBUTION

- BIR Form No. 2307 (EWT) for TQ ended April 2022

### REMITTANCE

- PhilHealth - PAR contributions for employers with PENs ending 5-9 for April 2022

## 21 SATURDAY - LAST DAY OF

### e-FILING

- BIR Form No. 2550M for April 2022 (eFPS filers under Group E)

### e-SUBMISSION

- SAWT for BIR Form No. 2306 for April 2022 (eFPS filers under Group E)

## 22 SUNDAY - LAST DAY OF

### e-FILING

- BIR Form No. 2550M for April 2022 (eFPS filers under Group D)

### e-SUBMISSION

- SAWT for BIR Form No. 2306 for April 2022 (eFPS filers under Group D)

## 23 MONDAY - LAST DAY OF

### e-FILING

- BIR Form No. 2550M for April 2022 (eFPS filers under Group C)

### e-SUBMISSION

- SAWT for BIR Form No. 2306 for April 2022 (eFPS filers under Group C)

## 24 TUESDAY - LAST DAY OF

### e-FILING

- BIR Form No. 2550M for April 2022 (eFPS filers under Group B)

### e-SUBMISSION

- SAWT for BIR Form No. 2306 for April 2022 (eFPS filers under Group B)

### REMITTANCE

- HDMF - MCRF contributions of employers whose names start with letters M to Q for April 2022

## 25 WEDNESDAY - LAST DAY OF

### e-FILING

- BIR Form No. 2550M for April 2022 (eFPS filers under Group A)

### e-PAYMENT

- BIR Form No. 2550M for April 2022 (all eFPS filers)

### e-FILING/FILING and e-PAYMENT/PAYMENT

- BIR Form Nos. 2550Q and 2551Q for TQ ended April 2022

### e-SUBMISSION/SUBMISSION

- SLSPI by VAT-registered taxpayers (non-eFPS filers) for TQ ended April 2022
- Sworn statement of volume of sales by manufacturers or Importers of alcohol and tobacco products for TQ ended April 2022
- SAWT for BIR Form No. 2306 for TQ ended April 2022
- SAWT for BIR Form No. 2306 for April 2022 (eFPS filers under Group A)

### SUBMISSION

- PhilHealth - remittance report for Employers with PENs ending 5-9 for April 2022

## 29 SUNDAY - LAST DAY OF

### SUBMISSION

- PEZA - Annual PEZA Report FY February 2022

## 30 MONDAY - LAST DAY OF

### e-FILING/FILING and e-PAYMENT/PAYMENT

- BIR Form No. 1702Q for CO ended March 2022

### e-SUBMISSION

- SLSPI by VAT-registered taxpayers (all eFPS filers) for CY March 2022
- SAWT for BIR Form No. 2307 for CY ended March 2022

### REGISTRATION

- Computerized books of accounts and other accounting records in CD-R, DVD-R or other optical media, and affidavit on the post-reporting requirements for CAS for FY ended April 2022

### SUBMISSION

- Inventory list for FY ended April 2022
- Annual ITR attachments for FY ended January 2022, including BIR Form No. 1709 (for eFPS Filers)

## 31 TUESDAY - LAST DAY OF

### FILING

- SEC - AFS of corporations whose securities are not registered under RSA or SRC for FY ended January 2022

### SUBMISSION

- BOI - Transcript sheets of ORB by qualified jewelry enterprises for FY ended April 2022

### REMITTANCE

- HDMF - MCRF contributions of employers whose names start with letters R to Z and numeral for April 2022
- SSS - Online remittance of R-5 contributions of all employers for April 2022

# MAY

# MAY



## Relief Operation after Typhoon Ulysses hit the Philippines

In coordination with PSAuse, two teams were deployed to provide relief help to two chosen areas. Photo was taken in one of the Barangays in Marikina City where flood water reached the 2nd floor of most houses. The team were composed of Raven Lim, James Agustin, Keyyanne Owerca, Ian Morante, Alyssa Palomo and Kira Ramos.

**Christian James A. Agustin**  
Senior Payroll Specialist, BPS Outsourcing Division

### Holidays

- Labor Day - May 1
- Eid al Fitr - May 3

S	M	T	W	T	F	S
1	2	3	4	5	6	7
8	9	10	11	12	13	14
15	16	17	18	19	20	21
22	23	24	25	26	27	28
29	30	31				

---

---

---

---

---

---

---

---

---

---

## 01 WEDNESDAY - LAST DAY OF

### SUBMISSION

- Engagement Letters and Renewals or Subsequent Agreements for Financial Audit by Independent CPAs for FY beginning August 1, 2022

## 05 SUNDAY - LAST DAY OF

### e-FILING/FILING and e-PAYMENT/PAYMENT

- BIR Form No. 2000 for May 2022
- BIR Form No. 2000-OT for May 2022

## 08 WEDNESDAY - LAST DAY OF

### e-SUBMISSION

- eSales report of taxpayers using CRM/POS and other sales machines with TIN ending in an even number for May 2022

### SUBMISSION

- Transcript sheets of ORB for alcohol products, tobacco products, petroleum products, non-essential goods, sweetened beverage products, mineral products and automobiles for May 2022

## 10 FRIDAY - LAST DAY OF

### e-FILING/FILING and e-PAYMENT/PAYMENT

- BIR Form No. 1600 and 1606 for May 2022 (all filers)
- BIR Form No. 2200C for May 2022
- BIR Form No. 0620 for May 2022

### FILING and REMITTANCE

- BIR Form Nos. 1601C, 0619E and 0619F for May 2022 (non-eFPS filers)

### e-SUBMISSION

- eSales report of taxpayers using CRM/POS and other sales machines with TIN ending in an odd number for May 2022
- MAP of BIR Form No. 1600 for May 2022 (all filers)

### SUBMISSION

- Transcript sheets of ORB for mineral products for May 2022
- A sugar cooperative's list of buyers of sugar for May 2022, together with a copy of certificate of advance payment of VAT made by each buyer appearing on the list
- Information return on releases of refined sugar by the proprietor or operator of a sugar refinery or mill for May 2022

### DISTRIBUTION

- BIR Form No. 2306 (VAT/PIT) for May 2022
- BIR Form No. 2307 (PT) for May 2022

## 11 SATURDAY - LAST DAY OF

### e-FILING

- BIR Form No. 1601C for May 2022 (eFPS filers under Group E)

### e-FILING and e-PAYMENT

- BIR Form Nos. 0619E and 0619F for May 2022 (eFPS filers under Group E)

## 12 SUNDAY - LAST DAY OF

### e-FILING

- BIR Form No. 1601C for May 2022 (eFPS filers under Group D)

### e-FILING and e-PAYMENT

- BIR Form Nos. 0619E and 0619F for May 2022 (eFPS filers under Group D)

# JUNE

## 13 MONDAY - LAST DAY OF

### e-FILING

- BIR Form No. 1601C for May 2022 (eFPS filers under Group C)

### e-FILING and e-PAYMENT

- BIR Form Nos. 0619E and 0619F for May 2022 (eFPS filers under Group C)

### FILING

- SEC - AFS of corporations whose securities are registered under RSA or SRC for FY ended February 2022

## 14 TUESDAY - LAST DAY OF

### e-FILING

- BIR Form No. 1601C for May 2022 (eFPS filers under Group B)

### e-FILING and e-PAYMENT

- BIR Form Nos. 0619E and 0619F for May 2022 (eFPS filers under Group B)

### REMITTANCE

- HDMF - MCRF contributions of employers whose names start with letters A to D for May 2022

### SUBMISSION

- PEZA - AFS and Annual ITR of PEZA-registered enterprises for FY ended January 2022, filed with the BIR on May 15, 2022
- IPA - Annual Tax Incentives Report of RBEs as required under TIMTA for the FY ended January 2022

## 15 WEDNESDAY - LAST DAY OF

### e-FILING

- BIR Form No. 1601C for May 2022 (eFPS filers under Group A)

### e-FILING and e-PAYMENT

- BIR Form Nos. 0619E and 0619F for May 2022 (eFPS filers under Group A)

### e-PAYMENT

- BIR Form No. 1601C for May 2022 (all eFPS filers)

### e-SUBMISSION

- Summary list of machines (CRM-POS) sold by machine distributors/dealers/vendors/suppliers for TO ended May 2022

### e-FILING/FILING and e-PAYMENT/PAYMENT

- BIR Forms No. 1702 and 1702-AIF for FY ended February 2022
- BIR Form No. 1707A for FY ended February 2022

### SUBMISSION

- Bound, loose-leaf books of accounts and other accounting records for FY ended May 2022
- Annual ITR attachments for FY ended February 2022, including BIR Form No. 1709 (for non-eFPS Filers)

### REMITTANCE

- PhilHealth - PAR contributions for Employers with PENs ending 0-4 for May 2022

## 19 SUNDAY - LAST DAY OF

### REMITTANCE

- HDMF - MCRF contributions of employers whose names start with letters E to I for May 2022

## 20 MONDAY - LAST DAY OF

### FILING and PAYMENT

- BIR Form No. 2550M for May 2022 (non-eFPS filers)

### e-SUBMISSION

- SAWT for BIR Form No. 2306 for May 2022 (non-eFPS filers)

### SUBMISSION

- PEZA - Economic Zone Monthly Performance Report for May 2022
- PhilHealth - remittance report for Employers with PENs ending 0-4 for May 2022

### DISTRIBUTION

- BIR Form No. 2307 (EWT) for TO ended May 2022

### REMITTANCE

- PhilHealth - PAR contributions for employers with PENs ending 5-9 for May 2022

## 21 TUESDAY - LAST DAY OF

### e-FILING

- BIR Form No. 2550M for May 2022 (eFPS filers under Group E)

### e-SUBMISSION

- SAWT for BIR Form No. 2306 for May 2022 (eFPS filers under Group E)

## 22 WEDNESDAY - LAST DAY OF

### e-FILING

- BIR Form No. 2550M for May 2022 (eFPS filers under Group D)

### e-SUBMISSION

- SAWT for BIR Form No. 2306 for May 2022 (eFPS filers under Group D)

## 23 THURSDAY - LAST DAY OF

### e-FILING

- BIR Form No. 2550M for May 2022 (eFPS filers under Group C)

### e-SUBMISSION

- SAWT for BIR Form No. 2306 for May 2022 (eFPS filers under Group C)

## 24 FRIDAY - LAST DAY OF

### e-FILING

- BIR Form No. 2550M for May 2022 (eFPS filers under Group B)

### e-SUBMISSION

- SAWT for BIR Form No. 2306 for May 2022 (eFPS filers under Group B)

### REMITTANCE

- HDMF - MCRF contributions of employers whose names start with letters M to O for May 2022

## 25 SATURDAY - LAST DAY OF

### e-FILING

- BIR Form No. 2550M for May 2022 (eFPS filers under Group A)

### e-PAYMENT

- BIR Form No. 2550M for May 2022 (all eFPS filers)

### e-FILING/FILING and e-PAYMENT/PAYMENT

- BIR Form Nos. 2550Q and 2551Q for TO ended May 2022

### e-SUBMISSION/SUBMISSION

- SLSLPI by VAT-registered taxpayers (non-eFPS filers) for TO ended May 2022
- Sworn statement of volume of sales by manufacturers or importers of alcohol and tobacco products for TO ended May 2022
- SAWT for BIR Form No. 2306 for TO ended May 2022
- SAWT for BIR Form No. 2306 for May 2022 (eFPS filers under Group A)

### SUBMISSION

- PhilHealth - remittance report for Employers with PENs ending 5-9 for May 2022

## 28 TUESDAY - LAST DAY OF

### FILING

- SEC - AFS of corporations whose securities are not registered under RSA or SRC for FY ended February 2022

## 29 WEDNESDAY - LAST DAY OF

### e-FILING/FILING and e-PAYMENT/PAYMENT

- BIR Form No. 1702Q for TO ended April 2022

### e-SUBMISSION

- SAWT for BIR Form No. 2307 for TO ended April 2022

### SUBMISSION

- PEZA - Annual PEZA Report FY March 2022

## 30 THURSDAY - LAST DAY OF

### PAYMENT

- LGU - Payment of real property tax second installment for 2022

### e-SUBMISSION

- SLSPI by VAT-registered taxpayers (all eFPS filers) for TO ended May 2022

### REGISTRATION

- Computerized books of accounts and other accounting records in CD-R, DVD-R or other optical media, and affidavit on the post-reporting requirements for CAS for FY ended May 2022

### SUBMISSION

- Inventory list for FY ended May 2022
- Annual ITR attachments for FY ended February 2022, including BIR Form No. 1709 (for eFPS Filers)
- BCI - Transcript sheets of ORB by qualified jewelry enterprises for FY ended May 2022

### REMITTANCE

- HDMF - MCRF contributions of employers whose names start with letters R to Z and numeral for May 2022
- SSS - Online remittance of R-5 contributions of all employers for May 2022

# JUNE



## Setting a good example

Last November 2020, Marikina City and the Rizal Province experienced flooding brought by Typhoon Ulysses. As a citizen of Marikina, who also experienced the effects of the typhoon, I led two relief operations for the typhoon victims -- one for Marikina City with the TOSP Alumni Community and another for Rizal in partnership with the BES-HNS Foundation. We were able to help over 650 families in Brgy Tumana, Malanday, IVC, Marikina City and 2,000 families in Baras and Rodriguez, Rizal.

### **Marielle A. Mataya**

Lead Consultant, Advisory Services

S	M	T	W	T	F	S
			1	2	3	4
5	6	7	8	9	10	11
12	13	14	15	16	17	18
19	20	21	22	23	24	25
26	27	28	29	30		

## Holidays

Independence Day - June 12

---

---

---

---

---

---

---

---

---

---



## 01 FRIDAY - LAST DAY OF

### SUBMISSION

- Engagement Letters and Renewals or Subsequent Agreements for Financial Audit by Independent CPAs for TY beginning September 1, 2022

## 05 TUESDAY - LAST DAY OF

### e-FILING/FILING and e-PAYMENT/PAYMENT

- BIR Form No. 2000 for June 2022
- BIR Form No. 2000-OT for June 2022

## 08 FRIDAY - LAST DAY OF

### e-SUBMISSION

- eSales report of taxpayers using CRM/POS and other sales machines with TIN ending in an even number for June 2022

### SUBMISSION

- Transcript sheets of ORB for alcohol products, tobacco products, petroleum products, non-essential goods, sweetened beverage products, mineral products and automobiles for June 2022

## 10 SUNDAY - LAST DAY OF

### e-FILING/FILING and e-PAYMENT/PAYMENT

- BIR Form No. 1690 and 1696 for June 2022 (all filers)
- BIR Form No. 2000C for June 2022
- BIR Form No. 0620 for June 2022

### FILING and REMITTANCE

- BIR Form No. 1601C for June 2022 (non-eFPS filers)

### e-SUBMISSION

- eSales report of taxpayers using CRM/POS and other sales machines with TIN ending in an odd number for June 2022
- MAP of BIR Form No. 1690 for June 2022 (all filers)

### SUBMISSION

- Transcript sheets of ORB for mineral products for June 2022
- A sugar cooperative's list of buyers of sugar for June 2022, together with a copy of certificate of advance payment of VAT made by each buyer appearing on the list
- Information return on releases of refined sugar by the proprietor or operator of a sugar refinery or mill for June 2022

### DISTRIBUTION

- BIR Form No. 2306 (VAT/PT) for June 2022
- BIR Form No. 2307 (PT) for June 2022

## 11 MONDAY - LAST DAY OF

### e-FILING

- BIR Form No. 1601C for June 2022 (eFPS filers under Group E)

## 12 TUESDAY - LAST DAY OF

### e-FILING

- BIR Form No. 1601C for June 2022 (eFPS filers under Group D)

## 13 WEDNESDAY - LAST DAY OF

### e-FILING

- BIR Form No. 1601C for June 2022 (eFPS filers under Group C)

## 14 THURSDAY - LAST DAY OF

### e-FILING

- BIR Form No. 1601C for June 2022 (eFPS filers under Group B)

### FILING

- SEC - AFS of corporations whose securities are registered under RSA or SRC for FY ended March 2022

### REMITTANCE

- HDMF - MCRF contributions by employers whose names start with letters A to D for June 2022

## 15 FRIDAY - LAST DAY OF

### e-FILING

- BIR Form No. 1601C for June 2022 (eFPS filers under Group A)

### e-PAYMENT

- BIR Form No. 1601C for June 2022 (all eFPS filers)

### e-SUBMISSION

- Summary list of machines (CRM-POS) sold by machine distributors/dealers/vendors/suppliers for CO ended June 2022

### e-FILING/FILING and e-PAYMENT/PAYMENT

- BIR Forms. No. 1702 and 1702-AIF for FY ended March 2022
- BIR Form No. 1707A for FY ended March 2022

### SUBMISSION

- Bound, loose-leaf books of accounts and other accounting records for FY ended June 2022
- Annual ITR attachments for FY ended March 2022, including BIR Form No. 1709 (for non-eFPS filers)
- List of medical practitioners of hospitals and clinics for CO June 2022
- PEZA - AFS and Annual ITR of PEZA-registered enterprises for FY ended February 2021, filed with the BIR on June 15, 2022
- IPA - Annual Tax Incentives Report of RBEs as required under TIMTA for the FY ended February 2022

### REMITTANCE

- PhilHealth - PAR contributions of Employers with PENs ending 0-4 for June 2022

## 19 TUESDAY - LAST DAY OF

### REMITTANCE

- HDMF - MCRF contributions by employers whose names start with letters E to L for June 2022

## 20 WEDNESDAY - LAST DAY OF

### FILING and PAYMENT

- BIR Form No. 2550M for June 2022 (non-eFPS filers)

### PAYMENT

- LGU - LBT third installment for CY 2022

### SUBMISSION

- SAWT for BIR Form No. 2306 for June 2022 (non-eFPS filers)
- Quarterly Report of Printer for CO June 2022
- Quarterly information on DST-exempt OCW's or OFW's remittances for CO ended June 2022
- PEZA - Economic Zone Monthly Performance Report for June 2022
- PhilHealth - remittance report for Employers with PENs ending 0-4 for June 2022

### DISTRIBUTION

- BIR Form No. 2307 (EWT) for CO ended June 2022

### REMITTANCE

- PhilHealth - PAR contributions of employers with PENs ending 5-9 for June 2022

## 21 THURSDAY - LAST DAY OF

### e-FILING

- BIR Form No. 2550M for June 2022 (eFPS filers under Group E)

### e-SUBMISSION

- SAWT for BIR Form No. 2306 for June 2022 (eFPS filers under Group E)

## 22 FRIDAY - LAST DAY OF

### e-FILING

- BIR Form No. 2550M for June 2022 (eFPS filers under Group D)

### e-SUBMISSION

- SAWT for BIR Form No. 2306 for June 2022 (eFPS filers under Group D)

## 23 SATURDAY - LAST DAY OF

### e-FILING

- BIR Form No. 2550M for June 2022 (eFPS filers under Group C)

### e-SUBMISSION

- SAWT for BIR Form No. 2306 for June 2022 (eFPS filers under Group C)

## 24 SUNDAY - LAST DAY OF

### e-FILING

- BIR Form No. 2550M for June 2022 (eFPS filers under Group B)

### e-SUBMISSION

- SAWT for BIR Form No. 2306 for June 2022 (eFPS filers under Group B)

### REMITTANCE

- HDMF - MCRF contributions by employers whose names start with letters M to O for June 2022

## 25 MONDAY - LAST DAY OF

### e-FILING

- BIR Form No. 2550M for June 2022 (eFPS filers under Group A)

### e-PAYMENT

- BIR Form No. 2550M for June 2022 (all eFPS filers)

### e-FILING/FILING and e-PAYMENT/PAYMENT

- BIR Form Nos. 2550Q and 2551Q for CO ended June 2022

### e-SUBMISSION/SUBMISSION

- SLSPI of VAT registered taxpayers (non-eFPS filers) for CO ended June 2022
- Sworn statement of volume of sales by manufacturers or importers of alcohol and tobacco products for CO ended June 2022
- SAWT for BIR Form No. 2306 for CO ended June 2022
- SAWT for BIR Form No. 2306 for June 2022 (eFPS filers under Group A)

### SUBMISSION

- PhilHealth - remittance report of Employers with PENs ending 5-9 for June 2022

## 29 FRIDAY - LAST DAY OF

### FILING

- SEC - AFS of corporations whose securities are not registered under RSA or SRC for FY ended March 2022

### SUBMISSION

- PEZA - Annual PEZA Report FY April 2022

## 30 SATURDAY - LAST DAY OF

### e-FILING/FILING and e-PAYMENT/PAYMENT

- BIR Form No. 1702Q for TQ ended May 2022

### e-SUBMISSION

- SLSPI of VAT-registered taxpayers (all eFPS filers) for CO ended June 2022
- SAWT for BIR Form No. 2307 for TQ ended May 2022

### REGISTRATION

- Computerized books of accounts and other accounting records in CD-R, DVD-R or other optical media, and affidavit on the post-reporting requirements for CAS for FY ended June 2022

### SUBMISSION

- Inventory list for FY ended June 2022
- Annual ITR attachments for FY ended March 2022, including BIR Form No. 1709 (for eFPS Filers)

## 31 SUNDAY - LAST DAY OF

### e-FILING/FILING and e-PAYMENT/PAYMENT

- BIR Form Nos. 1601EQ, 1601FQ, 1602Q, 1603Q and 1621 for CO ended June 2022

### e-SUBMISSION

- QAP for BIR Form Nos. 1601EQ, 1601FQ, 1602Q, 1603Q and 1621 (all filers) for CO ended June 2022

### SUBMISSION

- BCI - Transcript sheets of ORB of qualified jewelry enterprises for FY ended June 2022
- Sworn statement of every lessee, concessionaire, owner or operator of mines and quarry, processor of minerals, producer or manufacturer of mineral products for the first semester of 2022
- Leases Information Statement, together with contract of lease and building/pace layout, as of June 30, 2022

### REMITTANCE

- HDMF - MCRF contributions of employers whose names start with letters R to Z and numeral for June 2022
- SSS - Online remittance of R-5 contributions of all employers for June 2022

# JULY



# JULY

S	M	T	W	T	F	S
					1	2
3	4	5	6	7	8	9
10	11	12	13	14	15	16
17	18	19	20	21	22	23
24	25	26	27	28	29	30
31						

---

---

---

---

---

---

---

---

---

---



## Sparking inspiration

We go beyond when it comes to meetings, deadlines, and reports. Our strength is that we take good care of our clients. But to ensure that we deliver, we must also take good care of ourselves. Being in peak health, both physically and mentally, is the first step towards providing tip-top service. So make sure to take frequent breaks and stretch throughout the day.

**Grace Joboco**  
Director, BPS Outsourcing Division

## Holidays

Independence Day - June 12

## 01 MONDAY - LAST DAY OF

### SUBMISSION

- Engagement Letters and Renewals or Subsequent Agreements for Financial Audit by Independent CPAs for FY beginning October 1, 2022

## 05 FRIDAY - LAST DAY OF

### e-FILING/FILING and e-PAYMENT/PAYMENT

- BIR Form No. 2000 for July 2022
- BIR Form No. 2000-OT for July 2022

## 08 MONDAY - LAST DAY OF

### e-SUBMISSION

- eSales report of taxpayers using CRM/POS and other sales machines with TIN ending in an even number for July 2022

### SUBMISSION

- Transcript sheets of ORB for alcohol products, tobacco products, petroleum products, non-essential goods, sweetened beverage products, mineral products and automobiles for July 2022

## 10 WEDNESDAY - LAST DAY OF

### e-FILING/FILING and e-PAYMENT/PAYMENT

- BIR Form No. 1600 and 1606 for July 2022 (all filers)
- BIR Form No. 2200C for July 2022
- BIR Form No. 0620 for July 2022

### FILING and REMITTANCE

- BIR Form Nos. 1601C, 0619E and 0619F for July 2022 (non-eFPS filers)

### e-SUBMISSION

- eSales report of taxpayers using CRM/POS and other sales machines with TIN ending in an odd number for July 2022
- MAP of BIR Form No. 1600 for July 2022 (all filers)

### SUBMISSION

- Transcript sheets of ORB for mineral products for July 2022
- A sugar cooperative's list of buyers of sugar for July 2022, together with a copy of certificate of advance payment of VAT made by each buyer appearing on the list
- Information return on releases of refined sugar by the proprietor or operator of a sugar refinery or mill for July 2022

### DISTRIBUTION

- BIR Form No. 2306 (VAT/PT) for July 2022
- BIR Form No. 2307 (PT) for July 2022

## 11 THURSDAY - LAST DAY OF

### e-FILING

- BIR Form No. 1601C for July 2022 (eFPS filers under Group E)

### e-FILING and e-PAYMENT

- BIR Form Nos. 0619E and 0619F for July 2022 (eFPS filers under Group E)

## 12 FRIDAY - LAST DAY OF

### e-FILING

- BIR Form No. 1601C for July 2022 (eFPS filers under Group D)

### e-FILING and e-PAYMENT

- BIR Form Nos. 0619E and 0619F for July 2022 (eFPS filers under Group D)

## 13 SATURDAY - LAST DAY OF

### e-FILING

- BIR Form No. 1601C for July 2022 (eFPS filers under Group C)

### e-FILING and e-PAYMENT

- BIR Form Nos. 0619E and 0619F for July 2022 (eFPS filers under Group C)

### FILING

- SEC - AFS of corporations whose securities are registered under RSA or SRC for FY ended April 2022

## 14 SUNDAY - LAST DAY OF

### e-FILING

- BIR Form No. 1601C for July 2022 (eFPS filers under Group B)

### e-FILING and e-PAYMENT

- BIR Form Nos. 0619E and 0619F for July 2022 (eFPS filers under Group B)

### REMITTANCE

- HDMF - MCRF contributions of employers whose names start with letters A to D for July 2022

### SUBMISSION

- PEZA - AFS and Annual ITR of PEZA-registered enterprises for FY ended March 2022; filed with the BIR on July 15, 2022
- IPA - Annual Tax Incentives Report of RBEs as required under TMTA for the FY ended March 2022

## 15 MONDAY - LAST DAY OF

### e-FILING

- BIR Form No. 1601C for July 2022 (eFPS filers under Group A)

### e-FILING and e-PAYMENT

- BIR Form Nos. 0619E and 0619F for July 2022 (eFPS filers under Group A)

### e-PAYMENT

- BIR Form No. 1601C for July 2022 (all eFPS filers)

### e-SUBMISSION

- Summary list of machines (CRM-POS) sold by machine distributors/dealers/vendors/suppliers for TO ended July 2022

### e-FILING/FILING and e-PAYMENT/PAYMENT

- BIR Forms No. 1702 and 1702-AIF for FY ended April 2022
- BIR Form No. 1702A for FY ended April 2022
- BIR Form No. 1701Q for CO ended June 2022

### SUBMISSION

- Bound, loose-leaf books of accounts and other accounting records for FY ended July 2022
- Annual ITR attachments for FY ended April 2022, including BIR Form No. 1709 and (for non-eFPS Filers)

### REMITTANCE

- PhilHealth - PAR contributions of Employers with PENs ending 0-4 for July 2022

## 19 FRIDAY - LAST DAY OF

### REMITTANCE

- HDMF - MCRF contributions of employers whose names start with letters E to L for July 2022

## 20 SATURDAY - LAST DAY OF

### FILING and PAYMENT

- BIR Form No. 2650M for July 2022 (non-eFPS filers)

### SUBMISSION

- SAWT for BIR Form No. 2306 for July 2022 (non-eFPS filers)
- PEZA - Economic Zone Monthly Performance Report for July 2022
- PhilHealth - remittance report of Employers with PENs ending 0-4 for July 2022

### DISTRIBUTION

- BIR Form No. 2307 (EWT) for TO ended July 2022

### REMITTANCE

- PhilHealth - PAR contributions of employers with PENs ending 5-9 for July 2022

## 21 SUNDAY - LAST DAY OF

### e-FILING

- BIR Form No. 2650M for July 2022 (eFPS filers under Group E)

### e-SUBMISSION

- SAWT for BIR Form No. 2306 for July 2022 (eFPS filers under Group E)

## 22 MONDAY - LAST DAY OF

### e-FILING

- BIR Form No. 2650M for July 2022 (eFPS filers under Group D)

### e-SUBMISSION

- SAWT for BIR Form No. 2306 for July 2022 (eFPS filers under Group D)

## 23 TUESDAY - LAST DAY OF

### e-FILING

- BIR Form No. 2650M for July 2022 (eFPS filers under Group C)

### e-SUBMISSION

- SAWT for BIR Form No. 2306 for July 2022 (eFPS filers under Group C)

## 24 WEDNESDAY - LAST DAY OF

### e-FILING

- BIR Form No. 2650M for July 2022 (eFPS filers under Group B)

### e-SUBMISSION

- SAWT for BIR Form No. 2306 for July 2022 (eFPS filers under Group B)

### REMITTANCE

- HDMF - MCRF contributions of employers whose names start with letters M to O for July 2022

## 25 THURSDAY - LAST DAY OF

### e-FILING

- BIR Form No. 2650M for July 2022 (eFPS filers under Group A)

### e-PAYMENT

- BIR Form No. 2650M for July 2022 (all eFPS filers)

### e-FILING/FILING and e-PAYMENT/PAYMENT

- BIR Form Nos. 2650Q and 2651Q for TO ended July 2022

### SUBMISSION

- PhilHealth - remittance report of Employers with PENs ending 5-9 for July 2022

### e-SUBMISSION/SUBMISSION

- SLSPI of VAT-registered taxpayers (non-eFPS filers) for TO ended July 2022
- Sworn statement of volume of sales by manufacturers or importers of alcohol and tobacco products for TO ended July 2022
- SAWT for BIR Form No. 2306 for TO ended July 2022
- SAWT for BIR Form No. 2306 for July 2022 (eFPS filers under Group A)

## 28 SUNDAY - LAST DAY OF

### FILING

- SEC - AFS of corporations whose securities are not registered under RSA or SRC for FY ended April 2022

## 29 MONDAY - LAST DAY OF

### e-FILING/FILING and e-PAYMENT/PAYMENT

- BIR Form No. 1702Q for CO ended June 2022

### e-SUBMISSION

- SAWT for BIR Form No. 2307 for TO ended June 2022

### SUBMISSION

- PEZA - Annual PEZA Report FY May 2022

## 30 TUESDAY - LAST DAY OF

### e-SUBMISSION

- SLSPI of VAT-registered taxpayers (all eFPS filers) for TO ended July 2022

### REGISTRATION

- Computerized books of accounts and other accounting records in CD-R, DVD-R or other optical media, and affidavit on the post-reporting requirements for CAS for FY ended July 2022

### SUBMISSION

- Inventory list for FY ended July 2022
- Annual ITR attachments for FY ended April 2022, including BIR Form No. 1709 (for eFPS Filers)

## 31 WEDNESDAY - LAST DAY OF

### SUBMISSION

- BOI - Transcript sheets of ORB of qualified jewelry enterprises for FY ended July 2022

### REMITTANCE

- HDMF - MCRF contributions of employers whose names start with letters R to Z and numeral for July 2022
- SSS - Online remittance of R-5 contributions of all employers for July 2022

# AUGUST

# AUGUST

S	M	T	W	T	F	S
	1	2	3	4	5	6
7	8	9	10	11	12	13
14	15	16	17	18	19	20
21	22	23	24	25	26	27
28	29	30	31			

---

---

---

---

---

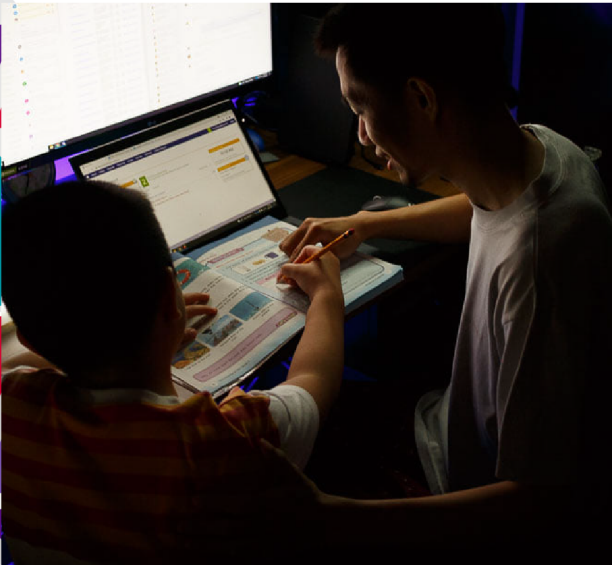
---

---

---

---

---



## Striking the right balance

When work shifted to remote setups, parents initially struggled to strike the right balance in juggling work and household duties. But with determination and the right go-beyond mindset, many began to see a silver lining in the situation. They stepped up their game to adapt to new arrangements and eventually found a great way to manage work deliverables and at the same time, provide hands-on tutoring to their kids.

**Leonard Duque**

Director, Technology Solutions Group

## Holidays

- Ninoy Aquino Day - August 21
- National Heroes' Day - August 29

## 01 THURSDAY - LAST DAY OF

### SUBMISSION

- Engagement Letters and Renewals or Subsequent Agreements for Financial Audit by Independent CPAs for FY beginning November 1, 2022

## 05 MONDAY - LAST DAY OF

### e-FILING/FILING and e-PAYMENT/PAYMENT

- BIR Form No. 2000 for August 2022
- BIR Form No. 2000-OT for August 2022

## 08 THURSDAY - LAST DAY OF

### e-SUBMISSION

- eSales report of taxpayers using CRM/POS and other sales machines with TIN ending in an even number for August 2022

### SUBMISSION

- Transcript sheets of ORB for alcohol products, tobacco products, petroleum products, non-essential goods, sweetened beverage products, mineral products and automobiles for August 2022

## 10 SATURDAY - LAST DAY OF

### e-FILING/FILING and e-PAYMENT/PAYMENT

- BIR Form No. 1600 and 1606 for August 2022 (all filers)
- BIR Form No. 2200C for August 2022
- BIR Form No. 0620 for August 2022

### FILING and REMITTANCE

- BIR Form Nos. 1601C, 0619E and 0619F for August 2022 (non-eFPS filers)

### e-SUBMISSION

- eSales report of taxpayers using CRM/POS and other sales machines with TIN ending in an odd number for August 2022
- MAP of BIR Form No. 1600 for August 2022 (all filers)

### SUBMISSION

- Transcript sheets of ORB for mineral products for August 2022
- A sugar cooperative's list of buyers of sugar for August 2022, together with a copy of certificate of advance payment of VAT made by each buyer appearing on the list
- Information returns on releases of refined sugar by the proprietor or operator of a sugar refinery or mill for August 2022

### DISTRIBUTION

- BIR Form No. 2306 (VAT/PT) for August 2022
- BIR Form No. 2307 (PT) for August 2022

## 11 SUNDAY - LAST DAY OF

### e-FILING

- BIR Form No. 1601C for August 2022 (eFPS filers under Group E)

### e-FILING and e-PAYMENT

- BIR Form Nos. 0619E and 0619F for August 2022 (eFPS filers under Group E)

## 12 MONDAY - LAST DAY OF

### e-FILING

- BIR Form No. 1601C for August 2022 (eFPS filers under Group D)

### e-FILING and e-PAYMENT

- BIR Form Nos. 0619E and 0619F for August 2022 (eFPS filers under Group D)

## 13 TUESDAY - LAST DAY OF

### e-FILING

- BIR Form No. 1601C for August 2022 (eFPS filers under Group C)

### e-FILING and e-PAYMENT

- BIR Form Nos. 0619E and 0619F for August 2022 (eFPS filers under Group C)

### FILING

- SEC - AFS of corporations whose securities are registered under RSA or SRC for FY ended May 2022

## 14 WEDNESDAY - LAST DAY OF

### e-FILING

- BIR Form No. 1601C for August 2022 (eFPS filers under Group B)

### e-FILING and e-PAYMENT

- BIR Form Nos. 0619E and 0619F for August 2022 (eFPS filers under Group B)

### REMITTANCE

- HDMF - MCRF contributions of employers whose names start with letters A to D for August 2022

### SUBMISSION

- PEZA - AFS and Annual ITR of PEZA-registered enterprises for FY ended April 2022, filed with the BIR on August 15, 2022
- IPA - Annual Tax Incentives Report of RBEs as required under TIMTA for the FY ended April 2022

## 15 THURSDAY - LAST DAY OF

### e-FILING

- BIR Form No. 1601C for August 2022 (eFPS filers under Group A)

### e-FILING and e-PAYMENT

- BIR Form Nos. 0619E and 0619F for August 2022 (eFPS filers under Group A)

### e-PAYMENT

- BIR Form No. 1601C for August 2022 (all eFPS filers)

### e-SUBMISSION

- Summary list of machines (CRM-POS) sold by machine distributors/dealers/vendors/suppliers for TO ended August 2022

### e-FILING/FILING and e-PAYMENT/PAYMENT

- BIR Forms. No. 1702 and 1702-AIF for FY ended May 2022
- BIR Form No. 1707A for FY ended May 2022

### SUBMISSION

- Bound, loose-leaf books of accounts and other accounting records for FY ended August 2022
- Annual ITR attachments for FY ended May 2022, including BIR Form No. 1709 (for non-eFPS filers)

### REMITTANCE

- PhilHealth - PAR contributions of Employers with PENs ending 0-4 for August 2022

## 19 MONDAY - LAST DAY OF

### REMITTANCE

- HDMF - MCRF contributions of employers whose names start with letters E to L for August 2022

## 20 TUESDAY - LAST DAY OF

### FILING and PAYMENT

- BIR Form No. 2550M for August 2022 (non-eFPS filers)

### e-SUBMISSION

- SAWT for BIR Form No. 2306 for August 2022 VAT return (non-eFPS filers)

### SUBMISSION

- PEZA - Economic Zone Monthly Performance Report for August 2022
- PhilHealth - remittance report of Employers with PENs ending 0-4 for August 2022

### DISTRIBUTION

- BIR Form No. 2307 (EWT) for TO ended August 2022

### REMITTANCE

- PhilHealth - PAR contributions of employers with PENs ending in 5-9 for August 2022

## 21 WEDNESDAY - LAST DAY OF

### e-FILING

- BIR Form No. 2550M for August 2022 (eFPS filers under Group E)

### e-SUBMISSION

- SAWT for BIR Form No. 2306 for August 2022 VAT return (eFPS filers under Group E)

## 22 THURSDAY - LAST DAY OF

### e-FILING

- BIR Form No. 2550M for August 2022 (eFPS filers under Group D)

### e-SUBMISSION

- SAWT for BIR Form No. 2306 for August 2022 (eFPS filers under Group D)

## 23 FRIDAY - LAST DAY OF

### e-FILING

- BIR Form No. 2550M for August 2022 (eFPS filers under Group C)

### e-SUBMISSION

- SAWT for BIR Form No. 2306 for August 2022 VAT return (eFPS filers under Group C)

## 24 SATURDAY - LAST DAY OF

### e-FILING

- BIR Form No. 2550M for August 2022 (eFPS filers under Group B)

### e-SUBMISSION

- SAWT for BIR Form No. 2306 for August 2022 VAT return (eFPS filers under Group B)

### REMITTANCE

- HDMF - MCRF contributions of employers whose names start with letters M to Q for August 2022

## 25 SUNDAY - LAST DAY OF

### e-FILING

- BIR Form No. 2550M for August 2022 (eFPS filers under Group A)

### e-PAYMENT

- BIR Form No. 2550M for August 2022 (all eFPS filers)

### e-FILING/FILING and e-PAYMENT/PAYMENT

- BIR Form Nos. 2550O and 2551O for TO ended August 2022

### e-SUBMISSION/SUBMISSION

- SLSPI of VAT-registered taxpayers (non-eFPS filers) for TO ended August 2022
- Sworn statement of volume of sales by manufacturers or importers of alcohol and tobacco products for TO ended August 2022

- SAWT for BIR Form No. 2306 for TO ended August 2022

- SAWT for BIR Form No. 2306 for August 2022 (eFPS filers under Group A)

### SUBMISSION

- PhilHealth - remittance report of Employers with PENs ending 5-9 for August 2022

## 28 WEDNESDAY - LAST DAY OF

### FILING

- SEC - AFS of corporations whose securities are not registered under RSA or SRC for FY ended May 2022

### SUBMISSION

- PEZA - Annual PEZA Report FY June 2022

## 29 THURSDAY - LAST DAY OF

### e-FILING/FILING and e-PAYMENT/PAYMENT

- BIR Form No. 1702Q for TO ended July 2022

### e-SUBMISSION

- SAWT for BIR Form No. 2307 for TO ended July 2022

## 30 FRIDAY - LAST DAY OF

### PAYMENT

- LGU - Payment of real property tax third installment for CY 2022

### e-SUBMISSION

- SLSPI of VAT-registered taxpayers (all eFPS filers) for TO ended August 2022

### REGISTRATION

- Computerized books of accounts and other accounting records in CD-R, DVD-R or other optical media, and affidavit on the post-reporting requirements for CAS for FY ended August 2022

### SUBMISSION

- Inventory list for FY ended August 2022
- Annual ITR attachments for FY ended May 2022, including BIR Form No. 1709 (for eFPS Filers)
- BCI - Transcript sheets of ORB of qualified jewelry enterprises for FY ended August 2022

### REMITTANCE

- HDMF - MCRF contributions of employers whose names start with letters R to Z and numeral for August 2022
- SSS - Online remittance of R-S contributions of all employers for August 2022

# SEPTEMBER

# SEPTEMBER



## Staying one step ahead

As a project-based employee at P&A Grant Thornton, I realized early on that I need to step up my game to become a regular employee. But however hard we try to avoid them, emergencies are out of our control. Heavy rains caused floods and we were forced to evacuate to a safer place. Besides our safety, I constantly thought about my pending tasks at work. I remember thinking that if I can save one thing from the heavy rains and flood, I will choose to save my laptop which has all my work projects. And that's exactly what I did.

**Kai Carlos**

Junior, Technology Solutions Group

S	M	T	W	T	F	S	
					1	2	3
4	5	6	7	8	9	10	
11	12	13	14	15	16	17	
18	19	20	21	22	23	24	
25	26	27	28	29	30		

---

---

---

---

---

---

---

---

---

---

## 01 SATURDAY - LAST DAY OF

### SUBMISSION

- Engagement Letters and Renewals or Subsequent Agreements for Financial Audit by Independent CPAs for FY beginning December 1, 2022

## 05 WEDNESDAY - LAST DAY OF

### e-FILING/FILING and e-PAYMENT/PAYMENT

- BIR Form No. 2000 for September 2022
- BIR Form No. 2000-OT for September 2022

## 08 SATURDAY - LAST DAY OF

### e-SUBMISSION

- eSales report of taxpayers using CRM/POS and other sales machines with TIN ending in an even number for of September 2022

### SUBMISSION

- Transcript sheets of ORB for alcohol products, tobacco products, petroleum products, non-essential goods, sweetened beverage products, mineral products and automobiles for September 2022

## 10 MONDAY - LAST DAY OF

### e-FILING/FILING and e-PAYMENT/PAYMENT

- BIR Form No. 1600 and 1606 for of September 2022 (all filers)
- BIR Form No. 2200C for September 2022
- BIR Form No. 0620 for September 2022

### FILING and REMITTANCE

- BIR Form No. 1601C for September 2022 (non-eFPS filers)

### e-SUBMISSION

- eSales report of taxpayers using CRM/POS and other sales machines with TIN ending in an odd number for September 2022
- MAP of BIR Form No. 1600 for September 2022 (all filers)

### SUBMISSION

- Transcript sheets of ORB for mineral products for September 2022
- A sugar cooperative's list of buyers of sugar for of September 2022, together with a copy of certificate of advance payment of VAT made by each buyer appearing on the list
- Information report on releases of refined sugar by the proprietor or operator of a sugar refinery or mill for of September 2022

### DISTRIBUTION

- BIR Form No. 2306 (VAT/PT) for of September 2022
- BIR Form No. 2307 (PT) for September 2022

## 11 TUESDAY - LAST DAY OF

### e-FILING

- BIR Form No. 1601C for September 2022 (eFPS filers under Group E)

## 12 WEDNESDAY - LAST DAY OF

### e-FILING

- BIR Form No. 1601C for September 2022 (eFPS filers under Group D)

## 13 THURSDAY - LAST DAY OF

### e-FILING

- BIR Form No. 1601C for September 2022 (eFPS filers under Group C)

### FILING

- SEC - AFS of corporations whose securities are registered under RSA or SRC for FY ended June 2022

## 14 FRIDAY - LAST DAY OF

### e-FILING

- BIR Form No. 1601C for September 2022 (eFPS filers under Group B)

### REMITTANCE

- HDMF - MCRF contributions of employers whose names start with letters A to D for September 2022

## 15 SATURDAY - LAST DAY OF

### e-FILING

- BIR Form No. 1601C for September 2022 (eFPS filers under Group A)

### e-PAYMENT

- BIR Form No. 1601C for September 2022 (all eFPS filers)

### e-SUBMISSION

- Summary list of machines (CRM-POS) sold by machine distributors/dealers/vendors/suppliers for CO ended September 2022

### e-FILING/FILING and e-PAYMENT/PAYMENT

- BIR Forms, No. 1702 and 1702-AIF for FY ended June 2022
- BIR Form No. 1707A for FY ended June 2022

### SUBMISSION

- Bound, loose-leaf books of accounts and other accounting records for FY ended September 2022
- Annual ITR attachments for FY ended June 2022, including BIR Form No. 1709 (for non-eFPS Filers)
- List of medical practitioners of hospitals and clinics for CO ended September 2022
- PEZA - AFS and Annual ITR of PEZA-registered enterprises for FY ended May 2022, filed with the BIR on September 15, 2022
- IPA - Annual Tax Incentives Report of RBEs as required under TIMTA for the FY ended May 2022

### REMITTANCE

- Philhealth - PAR contributions of Employers with PENs ending 0-4 for September 2022

## 19 WEDNESDAY - LAST DAY OF

### REMITTANCE

- HDMF - MCRF contributions of employers whose names start with letters E to L for September 2022

## 20 THURSDAY - LAST DAY OF

### FILING and PAYMENT

- BIR Form No. 2650M for September 2022 (non-eFPS filers)

### PAYMENT

- LGU - LBT fourth installment for CY 2022

### e-SUBMISSION

- SAWT for BIR Form No. 2306 for September 2022 VAT return (non-eFPS filers)
- Quarterly Report of Printer for CO September 2022

### SUBMISSION

- Quarterly information on DST-exempt OCW's or OFW's remittances for CO ended September 2022
- PEZA - Economic Zone Monthly Performance Report for September 2022
- PhilHealth - remittance report of Employes with PENs ending 0-4 for September 2022

### DISTRIBUTION

- BIR Form No. 2307 (EWI) and 2306 (FWT) for CO ended September 2022

### REMITTANCE

- Philhealth - PAR contributions of employers with PENs ending 5-9 for September 2022

## 21 FRIDAY - LAST DAY OF

### e-FILING

- BIR Form No. 2650M for September 2022 (eFPS filers under Group E)

### e-SUBMISSION

- SAWT for BIR Form No. 2306 for September 2022 VAT return (eFPS filers under Group E)

## 22 SATURDAY - LAST DAY OF

### e-FILING

- BIR Form No. 2650M for September 2022 (eFPS filers under Group D)

### e-SUBMISSION

- SAWT for BIR Form No. 2306 for September 2022 (eFPS filers under Group D)

## 23 SUNDAY - LAST DAY OF

### e-FILING

- BIR Form No. 2650M for September 2022 (eFPS filers under Group C)

### e-SUBMISSION

- SAWT for BIR Form No. 2306 for September 2022 VAT return (eFPS filers under Group C)

## 24 MONDAY - LAST DAY OF

### e-FILING

- BIR Form No. 2650M for September 2022 (eFPS filers under Group B)

### e-SUBMISSION

- SAWT for BIR Form No. 2306 for September 2022 VAT return (eFPS filers under Group B)

### REMITTANCE

- HDMF - MCRF contributions of employers whose names start with letters M to O for September 2022

## 25 TUESDAY - LAST DAY OF

### e-FILING

- BIR Form No. 2650M for September 2022 (eFPS filers under Group A)

### e-PAYMENT

- BIR Form No. 2650M for September 2022 (all eFPS filers)

### e-FILING/FILING and e-PAYMENT/PAYMENT

- BIR Form Nos. 2550Q and 2551Q for CO ended September 2022

### e-SUBMISSION/SUBMISSION

- SLSPI of VAT-registered taxpayers (non-eFPS filers) for CO ended September 2022
- Sworn statement of volume of sales by manufacturers or importers of alcohol for IO ended September 2022
- SAWT for BIR Form No. 2306 for IO ended September 2022
- SAWT for BIR Form No. 2306 for September 2022 (eFPS filers under Group A)

### SUBMISSION

- PhilHealth - remittance report of Employes with PENs ending 5-9 for September 2022

## 28 FRIDAY - LAST DAY OF

### FILING

- SEC - AFS of corporations whose securities are not registered under RSA or SRC for FY ended June 2022

## 29 SATURDAY - LAST DAY OF

### SUBMISSION

- PEZA - Annual PEZA Report FY July 2022

## 30 SUNDAY - LAST DAY OF

### e-FILING/FILING and e-PAYMENT/PAYMENT

- BIR Form No. 1702Q for IO ended August 2022

### e-SUBMISSION

- SLSPI of VAT-registered taxpayers (all eFPS filers) for CO ended September 2022
- SAWT for BIR Form No. 2307 for IO ended August 2022

### REGISTRATION

- Computerized books of accounts and other accounting records in CD-R, DVD-R or other optical media, and affidavit on the post-reporting requirements for CAS for FY ended September 2022

### SUBMISSION

- Inventory list for FY ended September 2022
- Annual ITR attachments for FY ended June 2022, including BIR Form No. 1709 (for eFPS Filers)

## 31 MONDAY - LAST DAY OF

### e-FILING/FILING and e-PAYMENT/PAYMENT

- BIR Form Nos. 1601EQ, 1601FO, 1602Q, 1603Q and 1621 for CO ended September 2022

### e-SUBMISSION

- OAP for BIR Form Nos. 1601EQ, 1601FO, 1602Q, 1603Q and 1621 (all filers) for the CO ended September 2022

### SUBMISSION

- BOI - Transcript sheets of ORB of qualified jewelry enterprises for FY ended September 2022

### REMITTANCE

- HDMF - MCRF contributions of employers whose names start with letters R to Z and numeral for September 2022
- SSS - Online remittance of R-5 contributions of all employers for September 2022

# OCTOBER



# OCTOBER

S	M	T	W	T	F	S
						1
2	3	4	5	6	7	8
9	10	11	12	13	14	15
16	17	18	19	20	21	22
23	24	25	26	27	28	29
30	31					

---

---

---

---

---

---

---

---

---

---



## Helping typhoon victims

This was taken last November 2020 when typhoon Ulysses wreaked havoc over certain parts of the country. Seeing people affected by the typhoon reminds me of how blessed I am. It pushed me to extend a helping hand. I believe a peso goes a long way, so I initiated a donation drive called "PISO mo, PAGASA ko" which allowed me to raise almost 21,000.00 pesos from different people. With the help of my college friends, we packed goods and distributed the relief packs to families in Marikina, Cagayan, and Isabela. Going beyond in helping people and seeing them smile makes my heart melt with joy.

### Tintin Permejo

Analyst, BPS Outsourcing Division - Staff Augmentation

## 01 TUESDAY - LAST DAY OF

### SUBMISSION

- Engagement Letters and Renewals or Subsequent Agreements for Financial Audit by Independent CPAs for FY beginning January 1, 2023

## 05 SATURDAY - LAST DAY OF

### e-FILING/FILING and e-PAYMENT/PAYMENT

- BIR Form No. 2000 for October 2022
- BIR Form No. 2000-OT for October 2022

## 08 TUESDAY - LAST DAY OF

### e-SUBMISSION

- eSales report of taxpayers using CRM/POS and other sales machines with TIN ending in an even number for October 2022

### SUBMISSION

- Transcript sheets of ORB for alcohol products, tobacco products, petroleum products, non-essential goods, sweetened beverage products, mineral products and automobiles for October 2022

## 10 THURSDAY - LAST DAY OF

### e-FILING/FILING and e-PAYMENT/PAYMENT

- BIR Form No. 1600 and 1606 for October 2022 [all filers]
- BIR Form No. 2200C for October 2022
- BIR Form No. 0620 for October 2022

### FILING and REMITTANCE

- BIR Form Nos. 1601C, 0619E and 0619F for October 2022 [non-eFPS filers]

### e-SUBMISSION

- eSales report of taxpayers using CRM/POS and other sales machines with TIN ending in an odd number for October 2022
- MAP of BIR Form No. 1600 for October 2022 [all filers]

### SUBMISSION

- Transcript sheets of ORB for mineral products for October 2022
- A sugar cooperative's list of buyers of sugar for October 2022, together with a copy of certificate of advance payment of VAT made by each buyer appearing on the list.
- Information return on releases of refined sugar by the proprietor or operator of a sugar refinery or mill for October 2022

### DISTRIBUTION

- BIR Form No. 2306 [WAT/PT] for October 2022
- BIR Form No. 2307 [PT] for October 2022

## 11 FRIDAY - LAST DAY OF

### e-FILING

- BIR Form No. 1601C for October 2022 [eFPS filers under Group E]

### e-FILING and e-PAYMENT

- BIR Form Nos. 0619E and 0619F for October 2022 [eFPS filers under Group E]

## 12 SATURDAY - LAST DAY OF

### e-FILING

- BIR Form No. 1601C for October 2022 [eFPS filers under Group D]

### e-FILING and e-PAYMENT

- BIR Form Nos. 0619E and 0619F for October 2022 [eFPS filers under Group D]

## 13 SUNDAY - LAST DAY OF

### e-FILING

- BIR Form No. 1601C for October 2022 [eFPS filers under Group C]

### e-FILING and e-PAYMENT

- BIR Form Nos. 0619E and 0619F for October 2022 [eFPS filers under Group C]

### FILING

- SEC - AFS of corporations whose securities are registered under RSA or SRC for FY ended July 2022

## 14 MONDAY - LAST DAY OF

### e-FILING

- BIR Form No. 1601C for October 2022 [eFPS filers under Group B]

### e-FILING and e-PAYMENT

- BIR Form Nos. 0619E and 0619F for October 2022 [eFPS filers under Group B]

### REMITTANCE

- HDMF - MCRF contributions of employers whose names start with letters A to D for October 2022

### SUBMISSION

- PEZA - AFS and Annual ITR of PEZA-registered enterprises for FY ended June 2022, filed with the BIR on October 15, 2022
- IPA - Annual Tax Incentives Report of RBEs as required under TMITA for the FY ended June 2022

## 15 TUESDAY - LAST DAY OF

### e-FILING

- BIR Form No. 1601C for October 2022 [eFPS filers under Group A]

### e-FILING and e-PAYMENT

- BIR Form Nos. 0619E and 0619F for October 2022 [eFPS filers under Group A]

### e-PAYMENT

- BIR Form No. 1601C for October 2022 [all eFPS filers]

### e-SUBMISSION

- Summary list of machines (CRM-POS) sold by machine distributors/dealers/vendors/suppliers for TO ended October 2022

### e-FILING/FILING and e-PAYMENT/PAYMENT

- BIR Forms No. 1702 and 1702-AIF for FY ended July 2022
- BIR Form No. 1707A for FY ended July 2022
- BIR Form No. 1701O for CO September 2022

### SUBMISSION

- Bound, loose-leaf books of accounts and other accounting records for FY ended October 2022
- Annual ITR attachments for FY ended July 2022, including BIR Form No. 1709 [for non-eFPS Filers]

### REMITTANCE

- PhilHealth - PAR contributions of Employers with PENs ending 0-4 for October 2022

## 19 SATURDAY - LAST DAY OF

### REMITTANCE

- HDMF - MCRF contributions of employers whose names start with letters E to L for October 2022

## 20 SUNDAY - LAST DAY OF

### FILING and PAYMENT

- BIR Form No. 2550M for October 2022 [non-eFPS filers]

### e-SUBMISSION

- SAWT for BIR Form No. 2306 for for October 2022 [non-eFPS filers]

### SUBMISSION

- PEZA - Economic Zone Monthly Performance Report for October 2022
- PhilHealth - remittance report of Employers with PENs ending in 0-4 for October 2022

### DISTRIBUTION

- BIR Form No. 2307 [EWT] for TO ended October 2022

### REMITTANCE

- PhilHealth - PAR contributions of employers with PENs ending in 5-9 for October 2022

## 21 MONDAY - LAST DAY OF

### e-FILING

- BIR Form No. 2550M for October 2022 [eFPS filers under Group E]

### e-SUBMISSION

- SAWT for BIR Form No. 2306 for October 2022 [eFPS filers under Group E]

## 22 TUESDAY - LAST DAY OF

### e-FILING

- BIR Form No. 2550M for October 2022 [eFPS filers under Group D]

### e-SUBMISSION

- SAWT for BIR Form No. 2306 for October 2022 [eFPS filers under Group D]

## 23 WEDNESDAY - LAST DAY OF

### e-FILING

- BIR Form No. 2550M for October 2022 [eFPS filers under Group C]

### e-SUBMISSION

- SAWT for BIR Form No. 2306 for for October 2022 [eFPS filers under Group C]

## 24 THURSDAY - LAST DAY OF

### e-FILING

- BIR Form No. 2550M for October 2022 [eFPS filers under Group B]

### e-SUBMISSION

- S-SAWT for BIR Form No. 2306 for for October 2022 [eFPS filers under Group B]

### REMITTANCE

- HDMF - MCRF contributions of employers whose names start with letters M to Q for October 2022

## 25 FRIDAY - LAST DAY OF

### e-FILING

- BIR Form No. 2550M for October 2022 [eFPS filers under Group A]

### e-PAYMENT

- BIR Form No. 2550M for October 2022 [all eFPS Filers]

### e-FILING/FILING and e-PAYMENT/PAYMENT

- BIR Form Nos. 2550O and 2551O for TO ended October 2022

### e-SUBMISSION/SUBMISSION

- SLSPI of VAT-registered taxpayers [non-eFPS filers] for TO ended October 2022
- Sworn statement of volume of sales by manufacturers or importers of alcohol and tobacco products for TO ended October 2022
- SAWT for BIR Form No. 2306 for TO ended October 2022
- SAWT for BIR Form No. 2306 for for October 2022 [eFPS filers under Group A]

### SUBMISSION

- PhilHealth - remittance report of Employers with PENs ending in 5-9 for October 2022

## 28 MONDAY - LAST DAY OF

### FILING

- SEC - AFS of corporations whose securities are not registered under RSA or SRC for FY ended July 2022

## 29 TUESDAY - LAST DAY OF

### e-FILING/FILING and e-PAYMENT/PAYMENT

- BIR Form No. 1702Q for CO ended September 2022

### e-SUBMISSION

- SAWT for BIR Form No. 2307 for CO ended September 2022

### SUBMISSION

- PEZA - Annual PEZA Report FY August 2022

## 30 WEDNESDAY - LAST DAY OF

### e-SUBMISSION

- SLSPI of VAT-registered taxpayers [all eFPS filers] for TO ended October 2022

### REGISTRATION

- Computerized books of accounts and other accounting records in CD-R, DVD-R or other optical media, and affidavit on the post-reporting requirements for CAS for FY ended October 2022

### SUBMISSION

- Inventory list for FY ended October 2022
- Annual ITR attachments for FY ended July 2022, including BIR Form No. 1709 [for eFPS Filers]
- BOI - Transcript sheets of ORB by qualified jewelry enterprises for FY ended October 2022

### REMITTANCE

- HDMF - MCRF contributions of employers whose names start with letters R to Z and numeral for October 2022
- SSS - Online remittance of R-5 contributions of all employers October 2022

# NOVEMBER

# NOVEMBER



## Building relationships

During the pandemic, it is important to stay connected with friends, family, and clients. I've also learned the wisdom behind the saying "sharing is caring". Let's always strive to be one step ahead in being a sunshine to others' rainy day

**Demi Alano**

Billings & Collection Staff I

S	M	T	W	T	F	S
		1	2	3	4	5
6	7	8	9	10	11	12
13	14	15	16	17	18	19
20	21	22	23	24	25	26
27	28	29	30			

---

---

---

---

---

---

---

---

---

---

## Holidays

All Saints' Day - November 1

All Souls' Day - November 2

Bonifacio Day - November 30

## 01 WEDNESDAY – LAST DAY OF

### SUBMISSION

- Engagement Letters & renewals or Subsequent Agreements for Financial Audit by Independent CPAs for FY beginning February 1, 2023

## 05 SUNDAY – LAST DAY OF

### e-FILING/FILING and e-PAYMENT/PAYMENT

- BIR Form No. 2000 for November 2022
- BIR Form No. 2000-OT for November 2022

## 08 WEDNESDAY – LAST DAY OF

### e-SUBMISSION

- eSales report of taxpayers using CRM/POS and other sales machines with TIN ending in an even number for November 2022

### SUBMISSION

- Transcript sheets of ORB for alcohol products, tobacco products, petroleum products, non-essential goods, sweetened beverage products, mineral products and automobiles for November 2022

## 10 FRIDAY – LAST DAY OF

### e-FILING/FILING and e-PAYMENT/PAYMENT

- BIR Form No. 1600 and 1606 for November 2022 (all filers)
- BIR Form No. 2200C for November 2022
- BIR Form No. 0620 for November 2022

### FILING and REMITTANCE

- BIR Form Nos. 1601C, 0619E and 0619F for November 2022 (non-eFPS filers)

### e-SUBMISSION

- eSales report of taxpayers using CRM/POS and other sales machines with TIN ending in an odd number for November 2022
- MAP of BIR Form No. 1600 for November 2022 (all filers)

### SUBMISSION

- Transcript sheets of ORB for mineral products for November 2022
- A sugar cooperative's list of buyers of sugar for November 2022, together with a copy of certificate of advance payment of VAT made by each buyer appearing on the list
- Information return on release of refined sugar by the proprietor or operator of a sugar refinery or mill for November 2022

### DISTRIBUTION

- BIR Form No. 2306 (WAT/PT) for November 2022
- BIR Form No. 2307 (PT) for November 2022

## 11 SATURDAY – LAST DAY OF

### e-FILING

- BIR Form No. 1601C for November 2022 (eFPS filers under Group E)

### e-FILING and e-PAYMENT

- BIR Form Nos. 0619E and 0619F for November 2022 (eFPS filers under Group E)

## 12 SUNDAY – LAST DAY OF

### e-FILING

- BIR Form No. 1601C for November 2022 (eFPS filers under Group D)

### e-FILING and e-PAYMENT

- BIR Form Nos. 0619E and 0619F for November 2022 (eFPS filers under Group D)

## 13 MONDAY – LAST DAY OF

### e-FILING

- BIR Form No. 1601C for November 2022 (eFPS filers under Group C)

### e-FILING and e-PAYMENT

- BIR Form Nos. 0619E and 0619F for November 2022 (eFPS filers under Group C)

## 14 TUESDAY – LAST DAY OF

### e-FILING

- BIR Form No. 1601C for November 2022 (eFPS filers under Group B)

### e-FILING and e-PAYMENT

- BIR Form Nos. 0619E and 0619F for November 2022 (eFPS filers under Group B)

### FILING

- SEC - AFS of corporations whose securities are registered under RSA or SRC for FY ended August 2022

### REMITTANCE

- SHDMF - MCRF contributions of employers whose names start with letters A to D for November 2022

## 15 WEDNESDAY – LAST DAY OF

### e-FILING

- BIR Form No. 1601C for November 2022 (eFPS filers under Group A)

### e-FILING and e-PAYMENT

- BIR Form Nos. 0619E and 0619F for November 2022 (eFPS filers under Group A)

### e-PAYMENT

- BIR Form No. 1601C for November 2022 (all eFPS filers)

### e-SUBMISSION

- Summary list of machines (CRM-POS) sold by machine distributors/dealers/vendors/suppliers for TO ended November 2022

### e-FILING/FILING and e-PAYMENT/PAYMENT

- BIR Forms No. 1702 and 1702-AIF for FY ended August 2022
- BIR Form No. 1707A for FY ended August 2022

### SUBMISSION

- Bound, loose-leaf books of accounts and other accounting records for FY ended November 2022
- Annual ITR attachments for FY ended August 2022, including BIR Form No. 1709 (for non-eFPS filers)
- PEZA - AFS and Annual ITR of PEZA-registered enterprises for FY ended July 2022, filed with the BIR on November 15, 2022
- IPA - Annual Tax Incentives Report of RBEs as required under TIMTA for the FY ended July 2022

### REMITTANCE

- PhilHealth - PAR contributions of Employers with PENs ending 0-4 for November 2022

## 19 SUNDAY – LAST DAY OF

### REMITTANCE

- HDMF - MCRF contributions of employers whose names start with letters E to L for November 2022

## 20 MONDAY – LAST DAY OF

### FILING and PAYMENT

- BIR Form No. 2550M for November 2022 (non-eFPS filers)

### e-SUBMISSION

- SAWT for BIR Form No. 2306 for November 2022 (non-eFPS filers)

### SUBMISSION

- BPEZA - Economic Zone Monthly Performance Report for November 2022
- PhilHealth - remittance report of Employers with PENs ending in 0-4 for November 2022

### DISTRIBUTION

- BIR Form No. 2307 (EWT) for TO ended November 2022

### REMITTANCE

- PhilHealth - PAR contributions of employers with PENs ending in 5-9 for November 2022

## 21 TUESDAY – LAST DAY OF

### e-FILING

- BIR Form No. 2550M for November 2022 (eFPS filers under Group E)

### e-SUBMISSION

- SAWT for BIR Form No. 2306 for November 2022 (eFPS filers under Group E)

## 22 WEDNESDAY – LAST DAY OF

### e-FILING

- BIR Form No. 2550M for November 2022 (eFPS filers under Group D)

### e-SUBMISSION

- SAWT for BIR Form No. 2306 for for November 2022 (eFPS filers under Group D)

## 23 THURSDAY – LAST DAY OF

### e-FILING

- BIR Form No. 2550M for November 2022 (eFPS filers under Group C)

### e-SUBMISSION

- SAWT for BIR Form No. 2306 for for November 2022 (eFPS filers under Group C)

## 24 FRIDAY – LAST DAY OF

### e-FILING

- BIR Form No. 2550M for November 2022 (eFPS filers under Group B)

### e-SUBMISSION

- SAWT for BIR Form No. 2306 for for November 2022 (eFPS filers under Group B)

### REMITTANCE

- HDMF - MCRF contributions of employers whose names start with letters M to O for November 2022

## 25 SATURDAY – LAST DAY OF

### e-FILING

- BIR Form No. 2550M for November 2022 (eFPS filers under Group A)

### e-PAYMENT

- BIR Form No. 2550M for November 2022 (all eFPS filers)

### e-FILING/FILING and e-PAYMENT/PAYMENT

- BIR Form Nos. 2550Q and 2551Q for TO ended November 2022

### e-SUBMISSION/SUBMISSION

- SLSP of VAT-registered taxpayers (non-eFPS filers) for TO ended November 2022
- Sworn statement of volume of sales by manufacturers or importers of alcohol and tobacco products for TO ended November 2022
- SAWT for BIR Form No. 2306 for TO ended November 2022
- SAWT for BIR Form No. 2306 for November 2022 (eFPS filers under Group A)

### SUBMISSION

- PhilHealth - remittance report of Employers with PENs ending in 5-9 for November 2022

## 29 WEDNESDAY – LAST DAY OF

### FILING

- SEC - AFS of corporations whose securities are not registered under RSA or SRC for FY ended August 2022

### SUBMISSION

- PEZA - Annual PEZA Report FY September 2022

## 30 THURSDAY – LAST DAY OF

### e-FILING/FILING and e-PAYMENT/PAYMENT

- BIR Form No. 1702Q for TO ended October 2022

### e-SUBMISSION

- SLSP of VAT-registered taxpayers (all eFPS filers) for TO ended November 2022

### REGISTRATION

- Computerized books of accounts and other accounting records in CD-R, DVD-R or other optical media, and affidavit on the post-reporting requirements for CAS for FY ended November 2022

### SUBMISSION

- Inventory list for FY ended November 2022
- Annual ITR attachments for FY ended August 2022, including BIR Form No. 1709 (for eFPS Filers)

## 31 FRIDAY – LAST DAY OF

### PAYMENT

- LGU - Payment of real property tax last installment of 2022

### SUBMISSION

- BOI - Transcript sheets of ORB by qualified jewelry enterprises for FY ended November 2022
- Importer statements of automobile manufacturers, assemblers or importers for second semester of CY 2022

### REMITTANCE

- HDMF - MCRF contributions of employers whose names start with letters R to Z and numeral for November 2022
- SSS - Online remittance of R-B contributions of all employers for November 2022

# DECEMBER

# DECEMBER



## Boosting client relations

We may be in a work-from-home setup, but here at PSA, we go beyond in strengthening client relations in every client meeting to offer the best service possible.

**Jonas Olaes**  
Lead Consultant, Advisory Services

S	M	T	W	T	F	S	
					1	2	3
4	5	6	7	8	9	10	
11	12	13	14	15	16	17	
18	19	20	21	22	23	24	
25	26	27	28	29	30	31	

---

---

---

---

---

---

---

---

---

---

## Holidays

- Immaculate Conception - December 8
- Christmas Day - December 25
- Rizal Day - December 30
- New Year's Eve - December 31